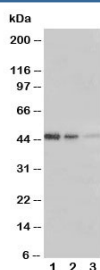


ERBB3 Antibody (HER3) (R30980)

Catalog No.	Formulation	Size
R30980	0.5mg/ml if reconstituted with 0.2ml sterile DI water	100 ug

Bulk quote request

Availability	1-3 business days
Species Reactivity	Human
Format	Antigen affinity purified
Clonality	Polyclonal (rabbit origin)
Isotype	Rabbit IgG
Purity	Antigen affinity
Buffer	Lyophilized from 1X PBS with 2.5% BSA and 0.025% sodium azide/thimerosal
UniProt	P21860
Applications	Western Blot : 0.5-1ug/ml
Limitations	This ERBB3 antibody is available for research use only.



Western blot testing of ERBB3 antibody and Lane 1: Recombinant human protein 5ng; 2: 2.5ng; 3: 1.25ng

Description

V-erb-b2 avian erythroblastic leukemia viral oncogene homolog 3, also known as HER3, is an enzyme that in humans is encoded by the ERBB3 gene. This gene encodes a member of the epidermal growth factor receptor (EGFR) family of receptor tyrosine kinases. This membrane-bound protein has a neuregulin binding domain but not an active kinase domain. By in situ hybridization, Kraus et al.(1989) mapped the gene to chromosome 12q13. Carraway et al.(1994) demonstrated that ERBB3 is a receptor for Heregulin and is capable of mediating HGL-stimulated tyrosine phosphorylation of itself. Most notably, EGFR and ERBB2 became markedly more promiscuous as the threshold was lowered, whereas ERBB3 did not. Engelman et al.(2007) found that amplification of MET caused gefitinib resistance by driving ERBB3-dependent activation of phosphoinositide 3-kinase, a pathway though to be specific to EGFR/ERBB family

receptors.

Application Notes

The stated application concentrations are suggested starting amounts. Titration of the ERBB3 antibody may be required due to differences in protocols and secondary/substrate sensitivity.

Immunogen

An amino acid sequence from the N-terminus of human ERBB3/HER3 (DWRDIVRDRDAEIVVKDNGR) was used as the immunogen for this ERBB3 antibody.

Storage

After reconstitution, the ERBB3 antibody can be stored for up to one month at 4°C. For long-term, aliquot and store at -20°C. Avoid repeated freezing and thawing.