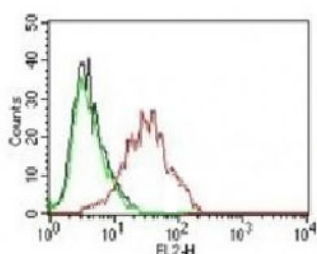


## ER Antibody / Estrogen Receptor alpha PE Conjugate [clone NR3Ga-3] (V7061PE)

Catalog No.	Formulation	Size
V7061PE-100T	500 ul at 0.1 mg/ml with 0.1 mg/ml BSA (US sourced), 0.05% sodium azide	100 Tests

[Bulk quote request](#)

Availability	1-3 business days
Species Reactivity	Human. Other species not known.
Format	PE Conjugate
Clonality	Monoclonal (mouse origin)
Isotype	Mouse IgG1, kappa
Clone Name	NR3Ga-3
Purity	Protein G affinity chromatography
Buffer	1X PBS, pH 7.4
Gene ID	2099 (Human)
Localization	Intracellular, Nuclear
Applications	Flow Cytometry : 5ul/test/million cells or 5ul/test/100ul of whole blood
Limitations	This ER antibody is available for research use only.



Intracellular FACS testing of human MCF-7 cells: Black=cells alone; Green=isotype control; Red=ER antibody

### Description

This antibody is specific to estrogen receptor (ER) alpha and shows minimal cross-reaction with other members of the family. Estrogen receptor is an important regulator of growth and differentiation in the mammary gland. Presence of estrogen receptor in breast tumors indicates an increased likelihood of response to anti-estrogen (e.g. tamoxifen) therapy.

## Application Notes

The concentration stated for each application is a general starting point. Variations in protocols, secondaries and substrates may require the antibody to be titrated up or down for optimal performance.

## Immunogen

Recombinant human ER alpha protein (aa 2-185) was used as the immunogen for this antibody.

## Storage

Store the ER antibody at 2-8°C. Conjugate is light sensitive, store in the dark.