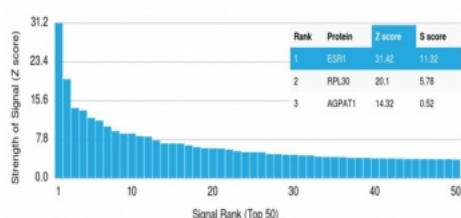


ER alpha Antibody / Estrogen Receptor alpha [clone AER311] (V5187)

Catalog No.	Formulation	Size
V5187-100UG	0.2 mg/ml in 1X PBS with 0.1 mg/ml BSA (US sourced), 0.05% sodium azide	100 ug
V5187-20UG	0.2 mg/ml in 1X PBS with 0.1 mg/ml BSA (US sourced), 0.05% sodium azide	20 ug
V5187SAF-100UG	1 mg/ml in 1X PBS; BSA free, sodium azide free	100 ug

[Bulk quote request](#)

Availability	1-3 business days
Species Reactivity	Human
Format	Purified
Clonality	Monoclonal (mouse origin)
Isotype	Mouse IgG2a, kappa
Clone Name	AER311
Purity	Protein A/G affinity
UniProt	P03372
Localization	Nuclear
Applications	Flow Cytometry : 0.5-1ug/million cells Immunofluorescence : 1-2ug/ml
Limitations	This ER alpha antibody is available for research use only.



Analysis of a HuProt(TM) microarray containing more than 19,000 full-length human proteins using ER alpha antibody (clone AER311). Z- and S- Score: The Z-score represents the strength of a signal that a monoclonal antibody (in combination with a fluorescently-tagged anti-IgG secondary antibody) produces when binding to a particular protein on the HuProt(TM) array. Z-scores are described in units of standard deviations (SD's) above the mean value of all signals generated on that array. If targets on HuProt(TM) are arranged in descending order of the Z-score, the S-score is the difference (also in units of SD's) between the Z-score. S-score therefore represents the relative target specificity of a mAb to its intended target. A mAb is considered to specific to its intended target, if the mAb has an S-score of at least 2.5. For example, if a mAb binds to protein X with a Z-score of 43 and to protein Y with a Z-score of 14, then the S-score for the binding of that mAb to protein X is equal to 29.

Description

This mAb is specific to ER alpha and shows minimal cross-reaction with other members of the family. Epitope of this mAb is mapped between amino acids 495-595 of E/F domain. Estrogen Receptor is an important regulator of growth and differentiation in the mammary gland. Presence of Estrogen Receptor in breast tumors indicates an increased likelihood of response to anti-estrogen (e.g. tamoxifen) therapy.

Application Notes

Optimal dilution of the ER alpha antibody should be determined by the researcher.

Immunogen

Estrogen Receptor purified from cow uterus was used as the immunogen for the ER alpha antibody. The epitope of this mAb is mapped between amino acids 495-595.

Storage

Aliquot the ER alpha antibody and store frozen at -20oC or colder. Avoid repeated freeze-thaw cycles.