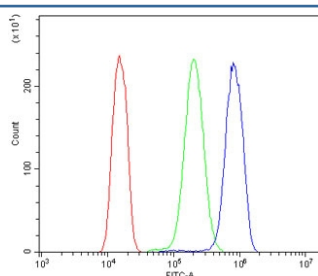


## EPS15 Antibody (RQ5974)

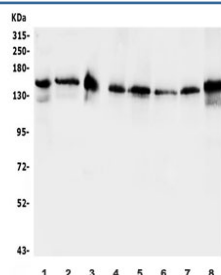
Catalog No.	Formulation	Size
RQ5974	0.5mg/ml if reconstituted with 0.2ml sterile DI water	100 ug

**Bulk quote request**

<b>Availability</b>	1-3 business days
<b>Species Reactivity</b>	Human, Mouse, Rat
<b>Format</b>	Antigen affinity purified
<b>Clonality</b>	Polyclonal (rabbit origin)
<b>Isotype</b>	Rabbit IgG
<b>Purity</b>	Affinity purified
<b>Buffer</b>	Lyophilized from 1X PBS with 2% Trehalose and 0.025% sodium azide
<b>UniProt</b>	P42566
<b>Applications</b>	Western Blot : 0.5-1ug/ml Flow Cytometry : 1-3ug/million cells Direct ELISA : 0.1-0.5ug/ml
<b>Limitations</b>	This EPS15 antibody is available for research use only.



Flow cytometry testing of human A431 cells with EPS15 antibody at 1ug/million cells (blocked with goat sera); Red=cells alone, Green=isotype control, Blue= EPS15 antibody.



Western blot testing of 1) rat brain, 2) mouse brain, 3) mouse NIH 3T3 and human 4) HeLa, 5) Jurkat, 6) HEK293, 7) PC-3 and 8) ThP1 lysate with EPS15 antibody. Predicted molecular weight ~99 kDa, routinely observed at 120-150 kDa.

## Description

Epidermal growth factor receptor substrate 15 is a protein that in humans is encoded by the EPS15 gene. It is mapped to 1p32.3. This gene encodes a protein that is part of the EGFR pathway. The protein is present at clatherin-coated pits and is involved in receptor-mediated endocytosis of EGF. Notably, this gene is rearranged with the HRX/ALL/MLL gene in acute myelogenous leukemias. Alternative splicing results in multiple transcript variants encoding distinct isoforms.

## Application Notes

Optimal dilution of the EPS15 antibody should be determined by the researcher.

## Immunogen

Recombinant human protein (amino acids M1-K295) was used as the immunogen for the EPS15 antibody.

## Storage

After reconstitution, the EPS15 antibody can be stored for up to one month at 4°C. For long-term, aliquot and store at -20°C. Avoid repeated freezing and thawing.