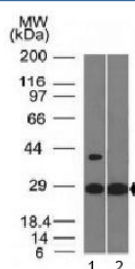


EPO Antibody / Erythropoietin [clone EPO/1368] (V3373)

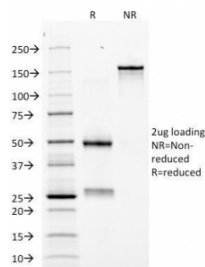
Catalog No.	Formulation	Size
V3373-100UG	0.2 mg/ml in 1X PBS with 0.1 mg/ml BSA (US sourced) and 0.05% sodium azide	100 ug
V3373-20UG	0.2 mg/ml in 1X PBS with 0.1 mg/ml BSA (US sourced) and 0.05% sodium azide	20 ug
V3373SAF-100UG	1 mg/ml in 1X PBS; BSA free, sodium azide free	100 ug

Bulk quote request

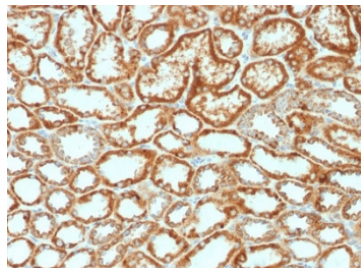
Availability	1-3 business days
Species Reactivity	Human
Format	Purified
Clonality	Monoclonal (mouse origin)
Isotype	Mouse IgG1, kappa
Clone Name	EPO/1368
Purity	Protein G affinity chromatography
UniProt	P01588
Localization	Cell surface, cytoplasmic
Applications	ELISA : 2-4ug/ml (order BSA/azide-free format) Western Blot : 1-2ug/ml Immunohistochemistry (FFPE) : 2-4ug/ml for 30 min at RT
Limitations	This EPO antibody is available for research use only.



Western blot testing of with EPO antibody (clone EPO/1368). Predicted molecular weight: 18-34 kDa depending on glycosylation level.



SDS-PAGE Analysis of Purified, BSA-Free EPO Antibody (clone EPO/1368). Confirmation of Integrity and Purity of the Antibody.



IHC staining of FFPE human renal cell carcinoma with EPO antibody. HIER: boil tissue sections in pH6, 10mM citrate buffer, for 10-20 min followed by cooling at RT for 20 min.

Human Protein Microarray Specificity Validation



Analysis of HuProt(TM) microarray containing more than 19,000 full-length human proteins using EPO antibody (clone EPO/1368). These results demonstrate the foremost specificity of the EPO/1368 mAb. Z- and S- score: The Z-score represents the strength of a signal that an antibody (in combination with a fluorescently-tagged anti-IgG secondary Ab) produces when binding to a particular protein on the HuProt(TM) array. Z-scores are described in units of standard deviations (SD's) above the mean value of all signals generated on that array. If the targets on the HuProt(TM) are arranged in descending order of the Z-score, the S-score is the difference (also in units of SD's) between the Z-scores. The S-score therefore represents the relative target specificity of an Ab to its intended target.

Description

Erythropoietin / EPO is a secreted, glycosylated cytokine hormone composed of four alpha helical bundles. It is the primary factor responsible for regulating erythropoiesis during steady-state conditions and in response to blood loss and hemorrhage in the adult organism. Erythropoietin is synthesized by the kidney and stimulates the proliferation and maturation of bone marrow erythroid precursor cells. The protein is found in the plasma and regulates red cell production by promoting erythroid differentiation and initiating hemoglobin synthesis.

Application Notes

Titration of the EPO antibody may be required for optimal performance.

1. Required HIER: boil tissue sections in 10mM citrate buffer, pH 6, for 10-20 min.

Immunogen

A human recombinant partial protein was used as the immunogen for the EPO antibody.

Storage

Store the EPO antibody at 2-8°C (with azide) or aliquot and store at -20°C or colder (without azide).

