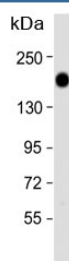


## Epidermal growth factor receptor Antibody (F50599)

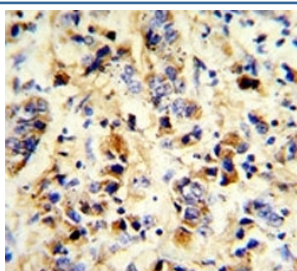
Catalog No.	Formulation	Size
F50599-0.4ML	In 1X PBS, pH 7.4, with 0.09% sodium azide	0.4 ml
F50599-0.08ML	In 1X PBS, pH 7.4, with 0.09% sodium azide	0.08 ml

**Bulk quote request**

<b>Availability</b>	1-3 business days
<b>Species Reactivity</b>	Human
<b>Format</b>	Purified
<b>Clonality</b>	Polyclonal (rabbit origin)
<b>Isotype</b>	Rabbit Ig
<b>Purity</b>	Purified
<b>UniProt</b>	P00533
<b>Localization</b>	Cytoplasmic, membranous
<b>Applications</b>	Western Blot : 1:1000 IHC (Paraffin) : 1:50-1:100
<b>Limitations</b>	This Epidermal growth factor receptor antibody is available for research use only.



Western blot analysis of Epidermal growth factor receptor antibody and HeLa lysate. Expected molecular weight: ~134/170 kDa (unmodified/glycosylated).



IHC analysis of FFPE human breast carcinoma stained with Epidermal growth factor receptor antibody

## Description

EGFR is a receptor tyrosine kinase binding ligands of the EGF family and activating several signaling cascades to convert extracellular cues into appropriate cellular responses. Known ligands include EGF, TGFA/TGF- $\alpha$ , amphiregulin, epigen/EPGN, BTC/betacellulin, epiregulin/EREG and HBEGF/heparin-binding EGF. Ligand binding triggers receptor homo- and/or heterodimerization and autophosphorylation on key cytoplasmic residues. The phosphorylated receptor recruits adapter proteins like GRB2 which in turn activates complex downstream signaling cascades. Activates at least 4 major downstream signaling cascades including the RAS-RAF-MEK-ERK, PI3 kinase-AKT, PLCgamma-PKC and STATs modules. May also activate the NF-kappa-B signaling cascade. Also directly phosphorylates other proteins like RGS16, activating its GTPase activity and probably coupling the EGF receptor signaling to the G protein-coupled receptor signaling. Also phosphorylates MUC1 and increases its interaction with SRC and CTNNB1/beta-catenin. [UniProt]

## Application Notes

Titration of the Epidermal growth factor receptor antibody may be required due to differences in protocols and secondary/substrate sensitivity.

## Immunogen

This EGFR antibody was produced from rabbits immunized with EGFR his fusion protein.

## Storage

Aliquot the Epidermal growth factor receptor antibody and store frozen at -20°C or colder. Avoid repeated freeze-thaw cycles.