

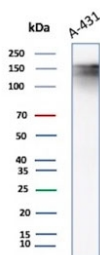
## Epidermal Growth Factor Receptor Antibody / EGFR [clone EGFR/8933R] (V5197)

Catalog No.	Formulation	Size
V5197-100UG	0.2 mg/ml in 1X PBS with 0.1 mg/ml BSA (US sourced), 0.05% sodium azide	100 ug
V5197-20UG	0.2 mg/ml in 1X PBS with 0.1 mg/ml BSA (US sourced), 0.05% sodium azide	20 ug
V5197SAF-100UG	1 mg/ml in 1X PBS; BSA free, sodium azide free	100 ug

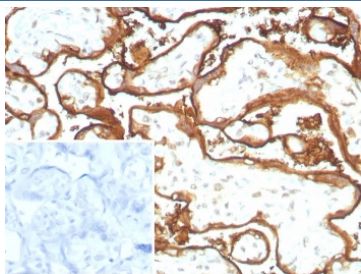
Recombinant **RABBIT MONOCLONAL**

[Bulk quote request](#)

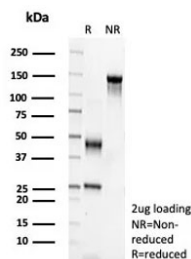
Availability	1-3 business days
Species Reactivity	Human
Format	Purified
Clonality	Recombinant Rabbit Monoclonal
Isotype	Rabbit IgG, kappa
Clone Name	EGFR/8933R
Purity	Protein A/G affinity
UniProt	P00533
Localization	Cell Surface
Applications	Immunohistochemistry (FFPE) : 1-2ug/ml for 30 min at RT Western Blot : 2-4ug/ml
Limitations	This Epidermal Growth Factor Receptor antibody is available for research use only.



Western blot testing of A431 lysate using Epidermal Growth Factor Receptor antibody.  
Expected molecular weight: 134-180 kDa depending on glycosylation level.



IHC staining of FFPE human placental tissue with Epidermal Growth Factor Receptor antibody (clone EGFR/8933R). HIER: boil tissue sections in pH 9 10mM Tris with 1mM EDTA for 20 min and allow to cool before testing.



SDS-PAGE analysis of purified, BSA-free Epidermal Growth Factor Receptor antibody (clone EGFR/8933R) as confirmation of integrity and purity.

## Description

This mAb recognizes a protein of 170kDa, identified as EGFR. EGFR is type I receptor tyrosine kinase with sequence homology to erbB-1, -2, -3 -4 or HER-1, -2, -3 -4. It binds to Epidermal Growth Factor (EGF), Transforming Growth Factor- $\alpha$  (TGF- $\alpha$ ), Heparin-binding EGF (HB-EGF), amphiregulin, betacellulin and epiregulin. EGFR is overexpressed in tumors of breast, brain, bladder, lung, gastric, head & neck, esophagus, cervix, vulva, ovary, and endometrium. It is predominantly present in squamous cell carcinomas.

## Application Notes

Optimal dilution of the Epidermal Growth Factor Receptor antibody should be determined by the researcher.

## Immunogen

A recombinant partial protein sequence (within amino acids 300-500) from the human protein was used as the immunogen for the Epidermal Growth Factor Receptor antibody.

## Storage

Aliquot the Epidermal Growth Factor Receptor antibody and store frozen at -20°C or colder. Avoid repeated freeze-thaw cycles.