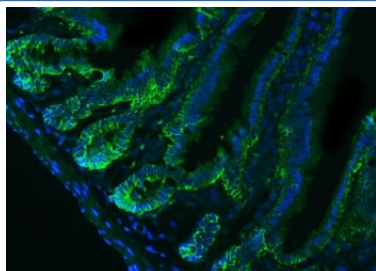


Epcam Antibody (RQ8046)

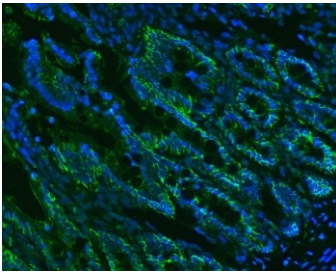
Catalog No.	Formulation	Size
RQ8046	0.5mg/ml if reconstituted with 0.2ml sterile DI water	100 ug

Bulk quote request

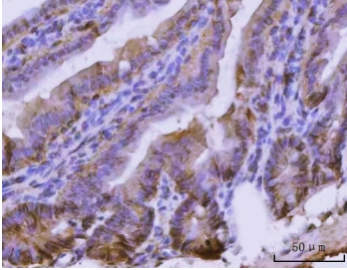
Availability	1-3 business days
Species Reactivity	Mouse, Rat
Format	Antigen affinity purified
Clonality	Polyclonal (rabbit origin)
Isotype	Rabbit IgG
Purity	Antigen affinity purified
Buffer	Lyophilized from 1X PBS with 2% Trehalose
UniProt	Q99JW5
Localization	Cell surface, cytoplasmic
Applications	Western Blot : 0.5-1ug/ml Immunohistochemistry (FFPE) : 2-5ug/ml Immunofluorescence : 5ug/ml Flow Cytometry : 1-3ug/million cells Direct ELISA : 0.1-0.5ug/ml
Limitations	This Epcam antibody is available for research use only.



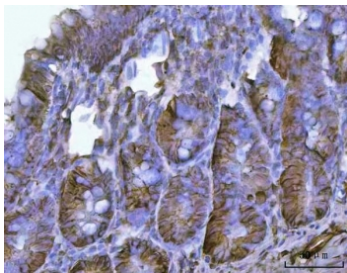
Immunofluorescent staining of FFPE mouse colon tissue with Epcam antibody (green) and DAPI nuclear stain (blue). HIER: steam section in pH8 EDTA buffer for 20 min.



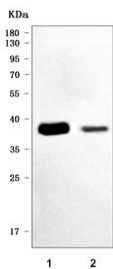
Immunofluorescent staining of FFPE rat colon tissue with Epcam antibody (green) and DAPI nuclear stain (blue). HIER: steam section in pH8 EDTA buffer for 20 min.



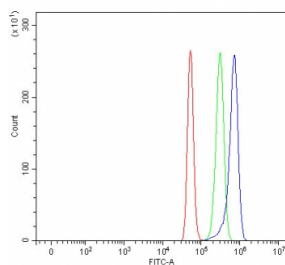
IHC staining of FFPE mouse colon tissue with Epcam antibody. HIER: boil tissue sections in pH8 EDTA for 20 min and allow to cool before testing.



IHC staining of FFPE rat colon tissue with Epcam antibody. HIER: boil tissue sections in pH8 EDTA for 20 min and allow to cool before testing.



Western blot testing of mouse 1) small intestine and 2) kidney tissue lysate with Epcam antibody. Expected molecular weight: ~35 kDa (unmodified), 40-43 kDa (glycosylated).



Flow cytometry testing of fixed and permeabilized mouse RAW264.7 cells with Epcam antibody at 1ug/million cells (blocked with goat sera); Red=cells alone, Green=isotype control, Blue= Epcam antibody.

Description

Epithelial cell adhesion molecule (EpCAM) is a transmembrane glycoprotein mediating Ca^{2+} -independent homotypic cell-cell adhesion in epithelia. This gene encodes a carcinoma-associated antigen and is a member of a family that includes at least two type I membrane proteins. This antigen is expressed on most normal epithelial cells and gastrointestinal carcinomas and functions as a homotypic calcium-independent cell adhesion molecule. The antigen is being used as a target for immunotherapy treatment of human carcinomas. Mutations in this gene result in congenital tufting enteropathy.

Application Notes

Optimal dilution of the Epcam antibody should be determined by the researcher.

Immunogen

E. coli-derived recombinant mouse protein (amino acids Q24-A267) was used as the immunogen for the Epcam antibody.

Storage

After reconstitution, the Epcam antibody can be stored for up to one month at 4°C. For long-term, aliquot and store at -20°C. Avoid repeated freezing and thawing.