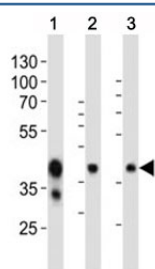


EpCAM Antibody (F53088)

Catalog No.	Formulation	Size
F53088-0.4ML	In 1X PBS, pH 7.4, with 0.09% sodium azide	0.4 ml
F53088-0.08ML	In 1X PBS, pH 7.4, with 0.09% sodium azide	0.08 ml

[Bulk quote request](#)

Availability	1-3 business days
Species Reactivity	Mouse
Predicted Reactivity	Rat
Format	Antigen affinity purified
Clonality	Polyclonal (rabbit origin)
Isotype	Rabbit Ig
Purity	Antigen affinity
UniProt	Q99JW5
Applications	Western Blot : 1:1000
Limitations	This EpCAM antibody is available for research use only.



Western blot analysis of mouse tissue lysate using EpCAM antibody at 1:1000. Expected molecular weight: ~35 kDa (unmodified), 40-43 kDa (glycosylated).

Description

May act as a physical homophilic interaction molecule between intestinal epithelial cells (IECs) and intraepithelial lymphocytes (IELs) at the mucosal epithelium for providing immunological barrier as a first line of defense against mucosal infection. Plays a role in embryonic stem cells proliferation and differentiation. Up-regulates the expression of FABP5, MYC and cyclins A and E (By similarity).

Application Notes

Titration of the EpCAM antibody may be required due to differences in protocols and secondary/substrate sensitivity.

Immunogen

This mouse Epcam antibody was produced from a rabbit immunized with a KLH conjugated synthetic peptide between 302-335 amino acids from the C-terminal region of mouse Epcam.

Storage

Aliquot the EpCAM antibody and store frozen at -20oC or colder. Avoid repeated freeze-thaw cycles.