

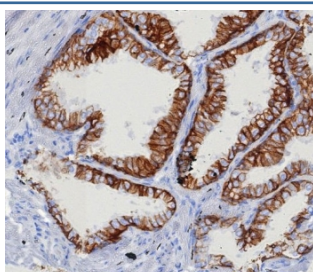
## EpCAM Antibody [clone EGP40/8130R] (V4918)

Catalog No.	Formulation	Size
V4918-100UG	0.2 mg/ml in 1X PBS with 0.1 mg/ml BSA (US sourced), 0.05% sodium azide	100 ug
V4918-20UG	0.2 mg/ml in 1X PBS with 0.1 mg/ml BSA (US sourced), 0.05% sodium azide	20 ug
V4918SAF-100UG	1 mg/ml in 1X PBS; BSA free, sodium azide free	100 ug

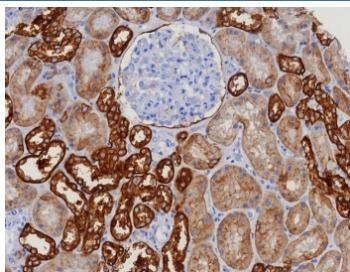
Recombinant **RABBIT MONOCLONAL**

[Bulk quote request](#)

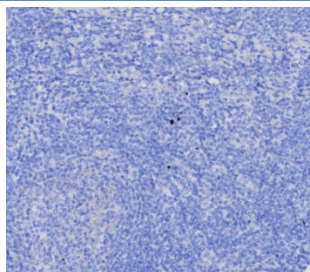
<b>Availability</b>	1-3 business days
<b>Species Reactivity</b>	Human
<b>Format</b>	Purified
<b>Clonality</b>	Recombinant Rabbit Monoclonal
<b>Isotype</b>	Rabbit IgG, kappa
<b>Clone Name</b>	EGP40/8130R
<b>Purity</b>	Protein A affinity
<b>UniProt</b>	P16422
<b>Localization</b>	Cell surface
<b>Applications</b>	Immunohistochemistry (FFPE) : 1-2ug/ml for 30 min at RT
<b>Limitations</b>	This EpCAM antibody is available for research use only.



IHC staining of FFPE human prostate carcinoma tissue with EpCAM antibody (clone EGP40/8130R). HIER: boil tissue sections in pH 9 10mM Tris with 1mM EDTA for 20 min and allow to cool before testing.



IHC testing of FFPE human kidney tissue with EGP40 antibody (clone EGP40/8130R).  
HIER: boil tissue sections in pH 9 10mM Tris with 1mM EDTA for 20 min and allow to cool before testing.



Negative control: IHC testing of FFPE human tonsil tissue with EGP40 antibody (clone EGP40/8130R) at 2ug/ml. HIER: boil tissue sections in pH 9 10mM Tris with 1mM EDTA for 20 min and allow to cool before testing.

## Description

EGP40, which is a 40-43kDa transmembrane epithelial glycoprotein, is also identified as epithelial specific antigen (ESA), or epithelial cellular adhesion molecule (Ep-CAM). It is expressed on baso-lateral cell surface in most simple epithelia and a vast majority of carcinomas. Antibody to Ep-CAM has been used to distinguish adenocarcinoma from pleural mesothelioma and hepatocellular carcinoma. This antibody is also useful in distinguishing serous carcinomas of the ovary from mesothelioma.

## Application Notes

Optimal dilution of the EpCAM antibody should be determined by the researcher.

## Immunogen

A recombinant human EpCAM fragment from extracellular domain (within amino acids 100-224) was used as the immunogen for the EpCAM antibody.

## Storage

Aliquot the EpCAM antibody and store frozen at -20oC or colder. Avoid repeated freeze-thaw cycles.