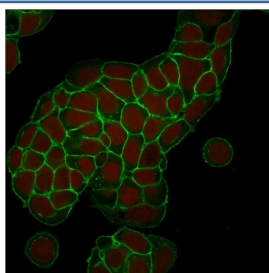


EpCAM Antibody [clone EGP40/1373] (V7930)

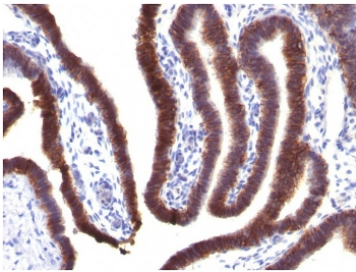
Catalog No.	Formulation	Size
V7930-100UG	0.2 mg/ml in 1X PBS with 0.1 mg/ml BSA (US sourced) and 0.05% sodium azide	100 ug
V7930-20UG	0.2 mg/ml in 1X PBS with 0.1 mg/ml BSA (US sourced) and 0.05% sodium azide	20 ug
V7930SAF-100UG	1 mg/ml in 1X PBS; BSA free, sodium azide free	100 ug

[Bulk quote request](#)

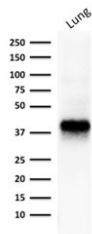
Availability	1-3 business days
Species Reactivity	Human, Dog, Cat
Format	Purified
Clonality	Monoclonal (mouse origin)
Isotype	Mouse IgG2b, kappa
Clone Name	EGP40/1373
Purity	Protein G affinity chromatography
UniProt	P16422
Localization	Cell surface, cytoplasmic
Applications	Western Blot : 1-2ug/ml Immunofluorescence : 1-3ug/ml Immunohistochemistry (FFPE) : 1-2ug/ml
Limitations	This EpCAM antibody is available for research use only.



Immunofluorescent staining of human MCF7 cells with EpCAM antibody (clone EGP40/1373, green) and Reddot nuclear stain (red).



IHC staining of FFPE human fallopian tube with EpCAM antibody (clone EGP40/1373).
HIER: boil tissue sections in pH 9 10mM Tris with 1mM EDTA for 10-20 min and allow to cool before testing.

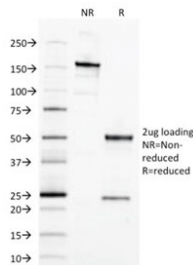


Western blot testing of human lung tissue lysate with EpCAM antibody. Expected molecular weight: ~35 kDa (unmodified), 40-43 kDa (glycosylated).

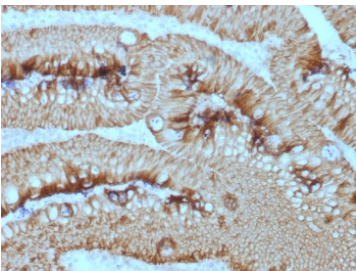
Human Protein Microarray Specificity Validation



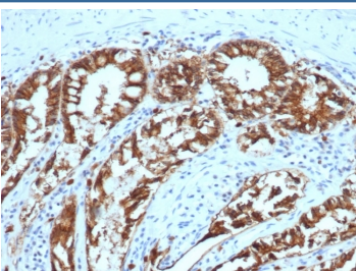
Analysis of HuProt(TM) microarray containing more than 19,000 full-length human proteins using EpCAM antibody (clone EGP40/1373). These results demonstrate the foremost specificity of the EGP40/1373 mAb.
Z- and S- score: The Z-score represents the strength of a signal that an antibody (in combination with a fluorescently-tagged anti-IgG secondary Ab) produces when binding to a particular protein on the HuProt(TM) array. Z-scores are described in units of standard deviations (SD's) above the mean value of all signals generated on that array. If the targets on the HuProt(TM) are arranged in descending order of the Z-score, the S-score is the difference (also in units of SD's) between the Z-scores. The S-score therefore represents the relative target specificity of an Ab to its intended target.



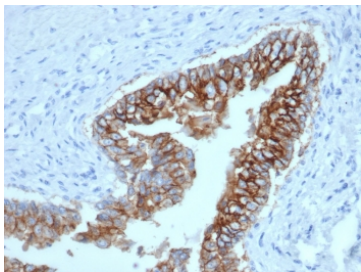
SDS-PAGE analysis of purified, BSA-free EpCAM antibody (clone EGP40/1373) as confirmation of integrity and purity.



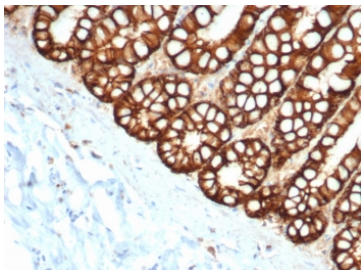
IHC staining of FFPE human rectal mass with EpCAM antibody (clone EGP40/1373).
HIER: boil tissue sections in pH 9 10mM Tris with 1mM EDTA for 10-20 min and allow to cool before testing.



IHC staining of FFPE dog colon with EpCAM antibody (clone EGP40/1373). HIER: boil tissue sections in pH 9 10mM Tris with 1mM EDTA for 10-20 min and allow to cool before testing.



IHC staining of FFPE dog bladder with EpCAM antibody (clone EGP40/1373). HIER: boil tissue sections in pH 9 10mM Tris with 1mM EDTA for 10-20 min and allow to cool before testing.



IHC staining of FFPE cat small intestine with EpCAM antibody (clone EGP40/1373). HIER: boil tissue sections in pH 9 10mM Tris with 1mM EDTA for 10-20 min and allow to cool before testing.

Description

EGP40 is a 40-43kDa transmembrane epithelial glycoprotein, also identified as epithelial specific antigen (ESA), or epithelial cellular adhesion molecule (Ep-CAM). It is expressed on baso-lateral cell surface in most simple epithelia and a vast majority of carcinomas. This antibody has been used to distinguish adenocarcinoma from pleural mesothelioma and hepatocellular carcinoma. This antibody is also useful in distinguishing serous carcinomas of the ovary from mesothelioma.

Application Notes

Optimal dilution of the EpCAM antibody should be determined by the researcher.

Immunogen

A human partial recombinant protein corresponding to amino acids 100-224 (extracellular domain) was used as the immunogen for the EpCAM antibody.

Storage

Store the EpCAM antibody at 2-8°C (with azide) or aliquot and store at -20°C or colder (without azide).