

EpCAM Antibody [clone 323/A3] (V2187)

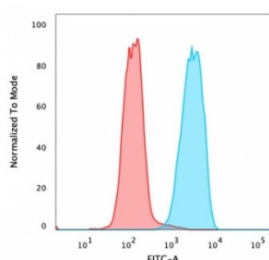
Catalog No.	Formulation	Size
V2187-100UG	0.2 mg/ml in 1X PBS with 0.1 mg/ml BSA (US sourced) and 0.05% sodium azide	100 ug
V2187-20UG	0.2 mg/ml in 1X PBS with 0.1 mg/ml BSA (US sourced) and 0.05% sodium azide	20 ug
V2187SAF-100UG	1 mg/ml in 1X PBS; BSA free, sodium azide free	100 ug
V2187IHC-7ML	Prediluted in 1X PBS with 0.1 mg/ml BSA (US sourced) and 0.05% sodium azide; *For IHC use only*	7 ml



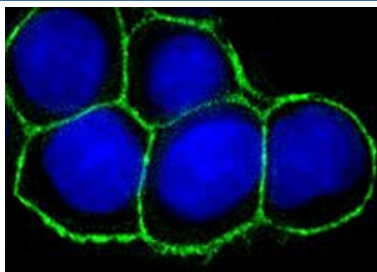
Citations (9)

[Bulk quote request](#)

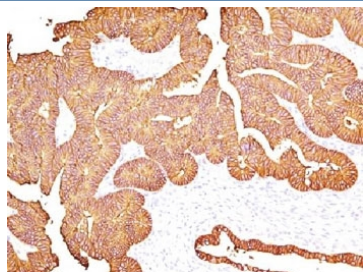
Species Reactivity	Human
Format	Purified
Clonality	Monoclonal (mouse origin)
Isotype	Mouse IgG1, kappa
Clone Name	323/A3
Purity	Protein G affinity chromatography
Buffer	1X PBS, pH 7.4
Gene ID	4072
Localization	Cell surface, cytoplasmic
Applications	Flow Cytometry : 1-2ug/million cells Immunofluorescence : 1-2ug/ml Immunohistochemistry (FFPE) : 1-2ug/ml for 30 min at RT
Limitations	This EpCAM antibody is available for research use only.



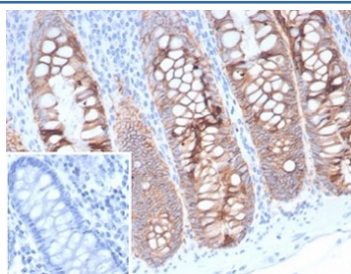
Flow cytometry testing of PFA-fixed human MCF7 cells with EpCAM antibody (clone 323/A3); Red=isotype control, Blue= EpCAM antibody.



Immunofluorescent testing of FFPE human HT29 cells with EpCAM antibody (clone 323/A3). Green = EpCAM antibody, blue = DAPI (nuclear stain).



IHC testing of FFPE human colon carcinoma with EpCAM antibody (clone 323/A3).



IHC testing of FFPE human colon tissue with EpCAM antibody (clone 323/A3). Inset: PBS used in place of primary Ab (secondary Ab negative control). HIER: boil tissue sections in pH 9 10mM Tris with 1mM EDTA for 20 min and allow to cool before testing.

Description

Epithelial cellular adhesion molecule (EpCAM), is also identified as epithelial specific antigen (ESA) and the 40kDa transmembrane epithelial glycoprotein EGP40. EpCAM is expressed on the baso-lateral cell surface in most simple epithelia and a vast majority of carcinomas. This antibody has been used to distinguish adenocarcinoma from pleural mesothelioma and hepatocellular carcinoma. EpCAM antibody is also useful in distinguishing serous carcinomas of the ovary from mesothelioma.

Application Notes

The concentration stated for each application is a general starting point. Variations in protocols, secondaries and substrates may require the antibody to be titrated up or down for optimal performance.

1. Staining of formalin/paraffin tissues **REQUIRES** digestion of tissue sections with pepsin at 1mg/ml Tris-HCl, pH 2.0 for 15 min at RT or 10 min at 37C.
2. The prediluted format is supplied in a dropper bottle and is optimized for use in IHC. After epitope retrieval step (if required), drip mAb solution onto the tissue section and incubate at RT for 30 min.

Immunogen

MCF-7 human breast cancer cells were used as the immunogen for this EpCAM antibody.

Storage

Store the EpCAM antibody at 2-8oC (with azide) or aliquot and store at -20oC or colder (without azide).

Alternate Names

Adenocarcinoma-associated Antigen; Cell Surface Glycoprotein Trop-1; EGP2; EGP314; EGP40; Epithelial Cell Adhesion Molecule; Epithelial Glycoprotein 314; ESA; KSA; TACD1; TACSTD1; TROP1; Tumor-associated Calcium Signal Transducer 1, ECS-1, Epidermal Surface Antigen 1, ESA1, FLOT2, Flotillin-2, M17S1 (Membrane Component, Chromosome 17, Surface Marker-1), REG-1, Reggie-1, Reggie-2, EpCAM antibody

References (1)