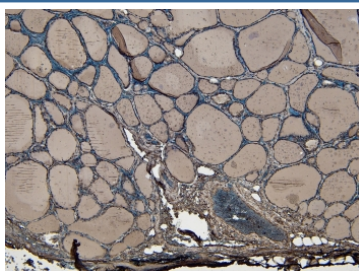


## ENPP1 Antibody / PC-1 (R34666)

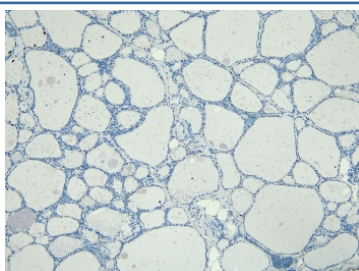
| Catalog No.  | Formulation   | Size   |
|--------------|---|--------|
| R34666-100UG | 0.5 mg/ml in 1X TBS, pH7.3, with 0.5% BSA (US sourced) and 0.02% sodium azide | 100 ug |

[Bulk quote request](#)

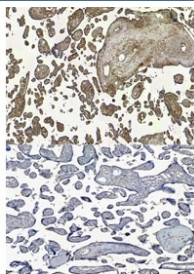
|                      |   |
|----------------------|---|
| Availability         | 1-3 business days   |
| Species Reactivity   | Human   |
| Predicted Reactivity | Mouse, Rat  |
| Format               | Antigen affinity purified   |
| Clonality            | Polyclonal (goat origin)  |
| Isotype              | Goat Ig   |
| Purity               | Antigen affinity  |
| Gene ID              | 5167  |
| Applications         | Immunohistochemistry (FFPE) : 4ug/ml<br>ELISA (peptide) LOD : 1:32000 |
| Limitations          | This ENPP1 antibody is available for research use only.               |



IHC staining of FFPE human thyroid gland tissue with ENPP1 antibody at 4ug/ml. HIER: steamed with pH6 citrate buffer, HRP-staining.



Negative control: IHC staining of FFPE human thyroid gland tissue without primary antibody. HIER: steamed with pH6 citrate buffer, HRP-staining.



IHC staining of FFPE human placental tissue with ENPP1 antibody at 5ug/ml (top) and without primary antibody (bottom). Required HIER: steamed antigen retrieval with pH6 citrate buffer; HRP-staining.

## Description

Additional name(s) for this target protein: Ectonucleotide pyrophosphatase/phosphodiesterase 1

## Application Notes

Optimal dilution of the ENPP1 antibody should be determined by the researcher.

## Immunogen

Amino acids KTHLPTFSQED were used as the immunogen for this ENPP1 antibody.

## Storage

Aliquot and store the ENPP1 antibody at -20oC.