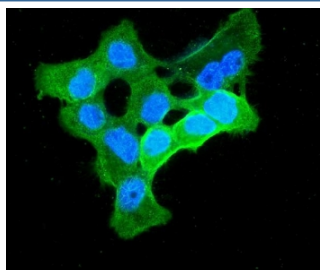


Enolase 1 Antibody / Alpha Enolase / ENO1 (RQ5668)

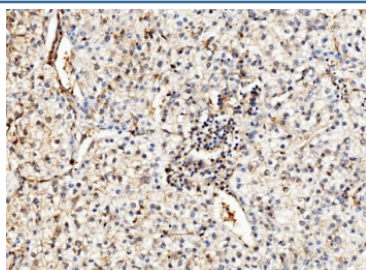
Catalog No.	Formulation	Size
RQ5668	0.5mg/ml if reconstituted with 0.2ml sterile DI water	100 ug

Bulk quote request

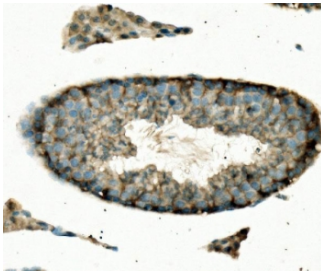
Availability	1-3 business days
Species Reactivity	Human, Mouse, Rat, Monkey
Format	Antigen affinity purified
Clonality	Polyclonal
Isotype	Rabbit IgG
Purity	Affinity purified
Buffer	Lyophilized from 1X PBS with 2% Trehalose and 0.025% sodium azide
UniProt	P06733
Applications	Western Blot : 0.5-1ug/ml Immunohistochemistry : 1-2ug/ml Immunofluorescence : 2-4ug/ml Flow Cytometry : 1-3ug/million cells Immunoprecipitation : 2ug per 500ul of lysate
Limitations	This Enolase 1 antibody is available for research use only.



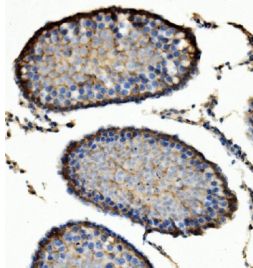
Immunofluorescent staining of FFPE human A431 cells with Enolase 1 antibody (green) and DAPI nuclear stain (blue). HIER: steam section in pH6 citrate buffer for 20 min.



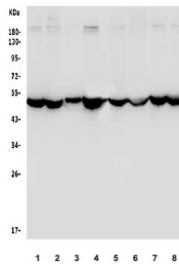
IHC staining of FFPE human liver cancer with Enolase 1 antibody. HIER: boil tissue sections in pH8 EDTA for 20 min and allow to cool before testing.



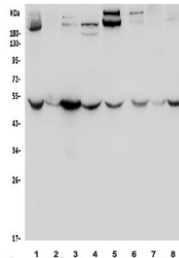
IHC staining of FFPE mouse testis with Enolase 1 antibody. HIER: boil tissue sections in pH8 EDTA for 20 min and allow to cool before testing.



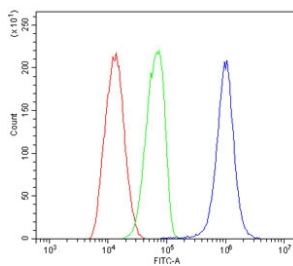
IHC staining of FFPE rat testis with Enolase 1 antibody. HIER: boil tissue sections in pH8 EDTA for 20 min and allow to cool before testing.



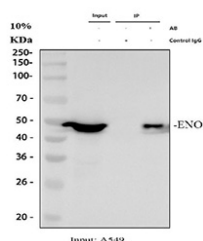
Western blot testing of human 1) HeLa, 2) HepG2, 3) SH-SY5Y, 4) U-87 MG, 5) HEK293, 6) Caco-2, 7) monkey kidney and 8) monkey liver lysate with Enolase 1 antibody. Predicted molecular weight ~47 kDa.



Western blot testing of rat 1) brain, 2) heart, 3) kidney, 4) liver, and mouse 5) brain, 6) kidney, 7) liver and 8) RAW264.7 lysate with Enolase 1 antibody. Predicted molecular weight ~47 kDa.



Flow cytometry testing of fixed and permeabilized human HL-60 cells with Enolase 1 antibody at 1ug/million cells (blocked with goat sera); Red=cells alone, Green=isotype control, Blue= Enolase 1 antibody.



Immunoprecipitation of Enolase 1 protein from 500ug of human A549 whole cell lysate with 2ug of Enolase 1 antibody.

