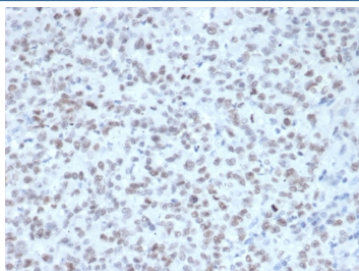


Enhancer of zeste homolog 2 Antibody / EZH2 / KTM6 [clone EZH2/4687] (V5236)

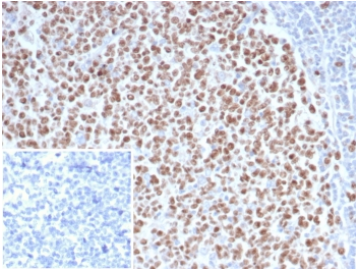
| Catalog No. | Formulation | Size |
|----------------|---|--------|
| V5236-100UG | 0.2 mg/ml in 1X PBS with 0.1 mg/ml BSA (US sourced), 0.05% sodium azide | 100 ug |
| V5236-20UG | 0.2 mg/ml in 1X PBS with 0.1 mg/ml BSA (US sourced), 0.05% sodium azide | 20 ug |
| V5236SAF-100UG | 1 mg/ml in 1X PBS; BSA free, sodium azide free | 100 ug |

Bulk quote request

| | |
|--------------------|---|
| Availability | 1-3 business days |
| Species Reactivity | Human |
| Format | Purified |
| Clonality | Monoclonal (mouse origin) |
| Isotype | Mouse IgG1, kappa |
| Clone Name | EZH2/4687 |
| Purity | Protein A/G affinity |
| UniProt | Q15910 |
| Localization | Nucleus |
| Applications | Immunohistochemistry (FFPE) : 1-2ug/ml for 30 min at RT |
| Limitations | This Enhancer of zeste homolog 2 antibody is available for research use only. |



IHC staining of FFPE human tonsil tissue with Enhancer of zeste homolog 2 antibody (clone EZH2/4687). Inset: PBS used in place of primary Ab (secondary Ab negative control). HIER: boil tissue sections in pH 9 10mM Tris with 1mM EDTA for 20 min and allow to cool before testing.



IHC staining of FFPE human Lynch disease colon tissue with Enhancer of zeste homolog 2 antibody (clone EZH2/4687). HIER: boil tissue sections in pH 9 10mM Tris with 1mM EDTA for 20 min and allow to cool before testing.

Description

This gene encodes a member of the Polycomb-group (PcG) family. PcG family members form multimeric protein complexes, which are involved in maintaining the transcriptional repressive state of genes over successive cell generations. This protein associates with the embryonic ectoderm development protein, the VAV1 oncoprotein, and the X-linked nuclear protein. This protein may play a role in the hematopoietic and central nervous systems. Multiple alternatively spliced transcript variants encoding distinct isoforms have been identified for this gene.

Application Notes

Optimal dilution of the Enhancer of zeste homolog 2 antibody should be determined by the researcher.

Immunogen

A recombinant partial protein sequence (within amino acids 300-550) from the human protein was used as the immunogen for the Enhancer of zeste homolog 2 antibody.

Storage

Aliquot the Enhancer of zeste homolog 2 antibody and store frozen at -20oC or colder. Avoid repeated freeze-thaw cycles.