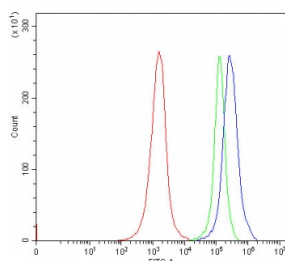


Endophilin-A3 Antibody / SH3GL3 (RQ7646)

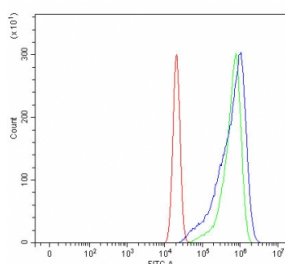
Catalog No.	Formulation	Size
RQ7646	0.5mg/ml if reconstituted with 0.2ml sterile DI water	100 ug

Bulk quote request

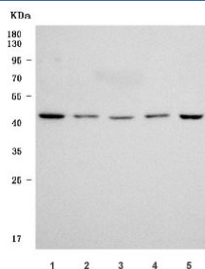
Availability	1-3 business days
Species Reactivity	Human, Mouse, Rat
Format	Antigen affinity purified
Clonality	Polyclonal (rabbit origin)
Isotype	Rabbit IgG
Purity	Antigen affinity purified
Buffer	Lyophilized from 1X PBS with 2% Trehalose
UniProt	Q99963
Applications	Western Blot : 0.5-1ug/ml Flow Cytometry : 1-3ug/million cells
Limitations	This Endophilin-A3 antibody is available for research use only.



Flow cytometry testing of human Jurkat cells with Endophilin-A3 antibody at 1ug/million cells (blocked with goat sera); Red=cells alone, Green=isotype control, Blue= Endophilin-A3 antibody.



Flow cytometry testing of human U-2 OS cells with Endophilin-A3 antibody at 1ug/million cells (blocked with goat sera); Red=cells alone, Green=isotype control, Blue= Endophilin-A3 antibody.



Western blot testing of 1) human K562, 2) human 293T, 3) human Jurkat, 4) rat testis and 5) mouse testis tissue lysate with Endophilin-A3 antibody. Predicted molecular weight ~39 kDa.

Description

Endophilin-A3 is a protein that in humans is encoded by the SH3GL3 gene. Enables identical protein binding activity. Predicted to be involved in synaptic vesicle uncoating. Predicted to be located in acrosomal vesicle; early endosome membrane; and presynapse. Predicted to be part of early endosome. Predicted to be active in glutamatergic synapse; postsynaptic density, intracellular component; and postsynaptic endosome.

Application Notes

Optimal dilution of the Endophilin-A3 antibody should be determined by the researcher.

Immunogen

Amino acids QLAVFIEAALDYHRQSTEILQELQ from the human protein were used as the immunogen for the Endophilin-A3 antibody.

Storage

After reconstitution, the Endophilin-A3 antibody can be stored for up to one month at 4°C. For long-term, aliquot and store at -20°C. Avoid repeated freezing and thawing.