

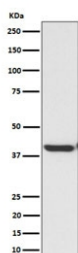
## ENDOGL1 Antibody / Endonuclease G-like 1 / EXOG [clone 28E53] (RQ8401)

Catalog No.	Formulation	Size
RQ8401	Antibody in PBS with 0.02% sodium azide, 50% glycerol and 0.4-0.5mg/ml BSA	100 ul

Recombinant **RABBIT MONOCLONAL**

[Bulk quote request](#)

Availability	1-3 business days
Species Reactivity	Human
Format	Purified
Clonality	Recombinant Rabbit Monoclonal
Isotype	Rabbit IgG
Clone Name	28E53
Purity	Affinity chromatography
UniProt	Q9Y2C4
Applications	Western Blot : 1:500-1:2000
Limitations	This ENDOGL1 antibody is available for research use only.



Western blot testing of human HepG2 cell lysate with ENDOGL1 antibody. Predicted molecular weight ~41 kDa.

### Description

Endo/exonuclease with nicking activity towards supercoiled DNA, a preference for single-stranded DNA and 5'-3' exonuclease activity. [UniProt]

### Application Notes

Optimal dilution of the ENDOGL1 antibody should be determined by the researcher.

### Immunogen

A synthetic peptide derived from human ENDOGL1 protein was used as the immunogen for the ENDOGL1 antibody.

## **Storage**

Store the ENDOGL1 antibody at -20oC.