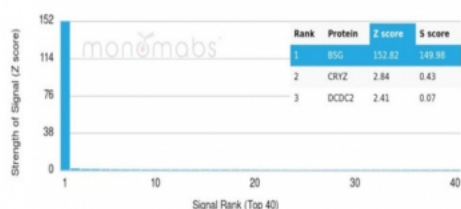


## Emmprin Antibody / BSG / CD147 [clone BSG/7950] (V4595)

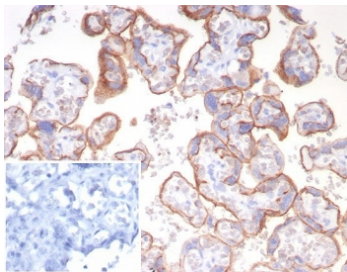
Catalog No.	Formulation	Size
V4595-100UG	0.2 mg/ml in 1X PBS with 0.1 mg/ml BSA (US sourced), 0.05% sodium azide	100 ug
V4595-20UG	0.2 mg/ml in 1X PBS with 0.1 mg/ml BSA (US sourced), 0.05% sodium azide	20 ug
V4595SAF-100UG	1 mg/ml in 1X PBS; BSA free, sodium azide free	100 ug

[Bulk quote request](#)

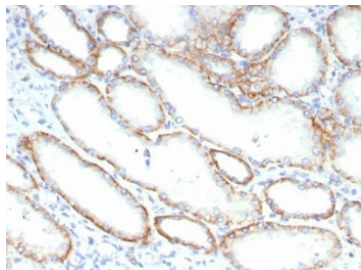
<b>Availability</b>	1-3 business days
<b>Species Reactivity</b>	Human
<b>Format</b>	Purified
<b>Clonality</b>	Monoclonal (mouse origin)
<b>Isotype</b>	Mouse IgG
<b>Clone Name</b>	BSG/7950
<b>Purity</b>	Protein A/G affinity
<b>UniProt</b>	P35613
<b>Localization</b>	Cell surface
<b>Applications</b>	Immunohistochemistry (FFPE) : 1-2ug/ml for 30 min at RT Western Blot : 2-4ug/ml
<b>Limitations</b>	This Emmprin antibody is available for research use only.



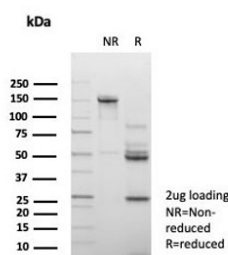
Analysis of a HuProt(TM) microarray containing more than 19,000 full-length human proteins using Emmprin antibody (clone BSG/7950). Z- and S- Score: The Z-score represents the strength of a signal that a monoclonal antibody (in combination with a fluorescently-tagged anti-IgG secondary antibody) produces when binding to a particular protein on the HuProt(TM) array. Z-scores are described in units of standard deviations (SD&#39;s) above the mean value of all signals generated on that array. If targets on HuProt(TM) are arranged in descending order of the Z-score, the S-score is the difference (also in units of SD&#39;s) between the Z-score. S-score therefore represents the relative target specificity of a mAb to its intended target. A mAb is considered to specific to its intended target, if the mAb has an S-score of at least 2.5. For example, if a mAb binds to protein X with a Z-score of 43 and to protein Y with a Z-score of 14, then the S-score for the binding of that mAb to protein X is equal to 29.



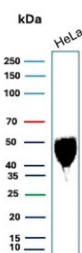
IHC staining of FFPE human placental tissue with Emmprin antibody (clone BSG/7950) at 2ug/ml. Inset: PBS used in place of primary Ab (secondary Ab negative control).  
HIER: boil tissue sections in pH 9 10mM Tris with 1mM EDTA for 20 min and allow to cool before testing.



IHC staining of FFPE human renal cell carcinoma tissue with Emmprin antibody (clone BSG/7950) at 2ug/ml. HIER: boil tissue sections in pH 9 10mM Tris with 1mM EDTA for 20 min and allow to cool before testing.



SDS-PAGE analysis of purified, BSA-free Emmprin antibody (clone BSG/7950) as confirmation of integrity and purity.



Western blot testing of human HeLa cell lysate with Emmprin antibody. Predicted molecular weight: ~27 kDa (unmodified), 43-66 kDa (glycosylated).

## Description

Emmprin is expressed more intensely on thymocytes than on mature peripheral blood T cells. It is important in spermatogenesis, embryo implantation, neural network formation, and tumor progression. It stimulates the production of interstitial collagenase, gelatinase A, stromelysin-1 and various metalloproteinases (MMPs) by fibroblasts. These enzymes are important factors in cancer invasion and metastasis.

## Application Notes

Optimal dilution of the Emmprin antibody should be determined by the researcher.

## Immunogen

Recombinant full-length human protein was used as the immunogen for the Emmprin antibody.

## Storage

Aliquot the Emmprin antibody and store frozen at -20oC or colder. Avoid repeated freeze-thaw cycles.

