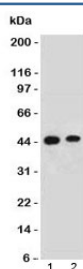


## EMI-1 Antibody [clone FBXP5] (V7090)

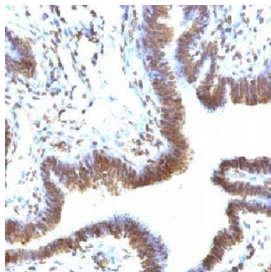
Catalog No.	Formulation	Size
V7090-100UG	0.2 mg/ml in 1X PBS with 0.1 mg/ml BSA (US sourced) and 0.05% sodium azide	100 ug
V7090-20UG	0.2 mg/ml in 1X PBS with 0.1 mg/ml BSA (US sourced) and 0.05% sodium azide	20 ug
V7090SAF-100UG	1 mg/ml in 1X PBS; BSA free, sodium azide free	100 ug
V7090IHC-7ML	Prediluted in 1X PBS with 0.1 mg/ml BSA (US sourced) and 0.05% sodium azide; *For IHC use only*	7 ml

[Bulk quote request](#)

<b>Availability</b>	1-3 business days
<b>Species Reactivity</b>	Human
<b>Format</b>	Purified
<b>Clonality</b>	Monoclonal (mouse origin)
<b>Isotype</b>	Mouse IgG2a, kappa
<b>Clone Name</b>	FBXP5
<b>Purity</b>	Protein G affinity chromatography
<b>UniProt</b>	Q9UKT4
<b>Localization</b>	Nuclear
<b>Applications</b>	Western Blot : 1-2ug/ml Immunohistochemistry (FFPE) : 1-2ug/ml for 30 min at RT Prediluted IHC Only Format : incubate for 30 min at RT (1)
<b>Limitations</b>	This EMI-1 antibody is available for research use only.



Western blot testing of human 1) HeLa and 2) 293 lysate with EMI-1 antibody. Predicted molecular weight: 50/45 kDa (isoforms 1/2).



IHC testing of FFPE human ovarian carcinoma and EMI-1 antibody (clone FBXP5). Staining of formalin-fixed tissues requires boiling tissue sections in pH 9 10mM Tris with 1mM EDTA for 10-20 min followed by cooling at RT for 20 min.

## Description

Early Mitotic Inhibitor-1 regulates mitosis by inhibiting the anaphase promoting complex/cyclosome (APC). It is a conserved F box protein containing a zinc-binding region essential for APC inhibition. The protein functions to promote cyclin A accumulation and S phase entry in somatic cells by inhibiting the APC complex. At the G1-S transition, EMI-1 is transcriptionally induced by the E2F transcription factor. Overexpression accelerates S-phase entry and can override a G1 block caused by overexpression of Cdh1 or the E2F-inhibitor p105 retinoblastoma protein (pRb). Depleting cells of EMI-1 through RNA interference prevents accumulation of cyclin A and inhibits S phase entry.

## Application Notes

Optimal dilution of the EMI-1 antibody should be determined by the researcher.

1. The prediluted format is supplied in a dropper bottle and is optimized for use in IHC. After epitope retrieval step (if required), drip mAb solution onto the tissue section and incubate at RT for 30 min.

## Immunogen

A human partial recombinant N-terminal protein fragment was used as the immunogen for the EMI-1 antibody.

## Storage

Store the EMI-1 antibody at 2-8oC (with azide) or aliquot and store at -20oC or colder (without azide).