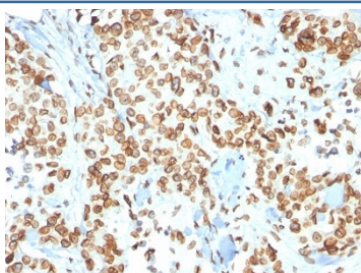


Emerin Antibody [clone EMD/2167] (V3833)

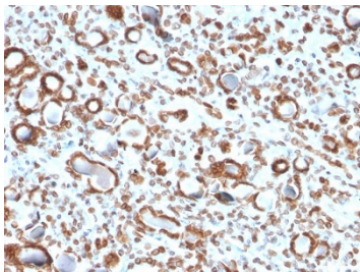
Catalog No.	Formulation	Size
V3833-100UG	0.2 mg/ml in 1X PBS with 0.1 mg/ml BSA (US sourced) and 0.05% sodium azide	100 ug
V3833-20UG	0.2 mg/ml in 1X PBS with 0.1 mg/ml BSA (US sourced) and 0.05% sodium azide	20 ug
V3833SAF-100UG	1 mg/ml in 1X PBS; BSA free, sodium azide free	100 ug

[Bulk quote request](#)

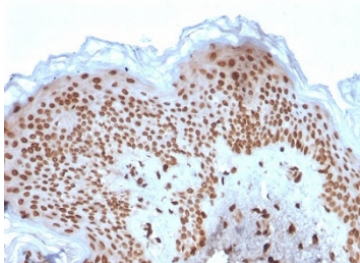
Availability	1-3 business days
Species Reactivity	Human
Format	Purified
Clonality	Monoclonal (mouse origin)
Isotype	Mouse IgG1, kappa
Clone Name	EMD/2167
Purity	Protein G affinity chromatography
UniProt	P50402
Localization	Nuclear membrane
Applications	Western Blot : 0.5-2ug/ml Immunofluorescence : 1-3ug/ml Immunohistochemistry (FFPE) : 1-2ug/ml for 30 min at RT
Limitations	This Emerin antibody is available for research use only.



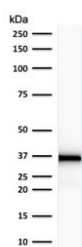
IHC testing of FFPE human breast carcinoma with Emerin antibody (clone EMD/2167). Required HIER: boiling tissue sections in 10mM citrate buffer, pH 6, for 10-20 min and allow to cool prior to staining.



IHC testing of FFPE human renal cell carcinoma with Emerin antibody (clone EMD/2167). Required HIER: boiling tissue sections in 10mM citrate buffer, pH 6, for 10-20 min and allow to cool prior to staining.

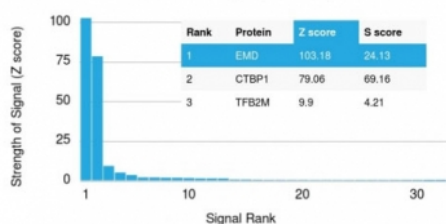


IHC testing of FFPE human basal cell carcinoma with Emerin antibody (clone EMD/2167). Required HIER: boiling tissue sections in 10mM citrate buffer, pH 6, for 10-20 min and allow to cool prior to staining.

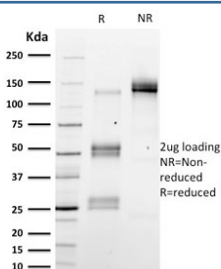


Western blot testing of human HeLa cell lysate with Emerin antibody (clone EMD/2167). Expected molecular weight: 29-34 kDa.

Human Protein Microarray Specificity Validation



Analysis of HuProt(TM) microarray containing more than 19,000 full-length human proteins using Emerin antibody (clone EMD/2167). These results demonstrate the foremost specificity of the EMD/2167 mAb.
Z- and S- score: The Z-score represents the strength of a signal that an antibody (in combination with a fluorescently-tagged anti-IgG secondary Ab) produces when binding to a particular protein on the HuProt(TM) array. Z-scores are described in units of standard deviations (SD's) above the mean value of all signals generated on that array. If the targets on the HuProt(TM) are arranged in descending order of the Z-score, the S-score is the difference (also in units of SD's) between the Z-scores. The S-score therefore represents the relative target specificity of an Ab to its intended target.



SDS-PAGE analysis of purified, BSA-free Emerin antibody (clone EMD/2167) as confirmation of integrity and purity.

Description

Emerin is a member of the nuclear lamina associated protein family. It is ubiquitously expressed and localized to the nuclear membrane in normal cells. Mutations of the gene that encodes emerin result in the X-linked recessive disease Emery-Dreifuss muscular dystrophy (EDMD), which is characterized by slowly progressing contractures, skeletal muscle wasting and cardiomyopathy. Reportedly, lack of Emerin expression is one cause of EDMD. Emerin is involved in the association of the nuclear membrane with the lamina, and is localized specifically to desmosomes and fascia adherens in the heart. Identification of nuclear membrane irregularities with anti-emerin antibody has been reported useful in

diagnosing papillary thyroid carcinoma.

Application Notes

Titering of the Emerin antibody may be required for optimal performance.

Immunogen

A portion of amino acids 56-167 from the human protein was used as the immunogen for the Emerin antibody.

Storage

Store the Emerin antibody at 2-8°C (with azide) or aliquot and store at -20°C or colder (without azide).