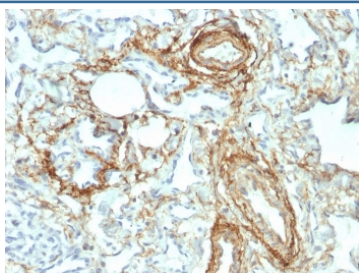


## Elastin Antibody [clone ELN/2069] (V8464)

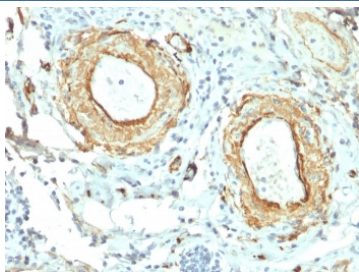
Catalog No.	Formulation	Size
V8464-100UG	0.2 mg/ml in 1X PBS with 0.1 mg/ml BSA (US sourced) and 0.05% sodium azide	100 ug
V8464-20UG	0.2 mg/ml in 1X PBS with 0.1 mg/ml BSA (US sourced) and 0.05% sodium azide	20 ug
V8464SAF-100UG	1 mg/ml in 1X PBS; BSA free, sodium azide free	100 ug

[Bulk quote request](#)

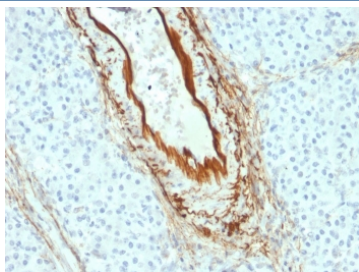
<b>Availability</b>	1-3 business days
<b>Species Reactivity</b>	Human
<b>Format</b>	Purified
<b>Clonality</b>	Monoclonal (mouse origin)
<b>Isotype</b>	Mouse IgG1, kappa
<b>Clone Name</b>	ELN/2069
<b>Purity</b>	Protein G affinity chromatography
<b>UniProt</b>	P15502
<b>Localization</b>	Secreted
<b>Applications</b>	ELISA : order Ab without BSA for coating Immunohistochemistry (FFPE) : 1-2ug/ml for 30 min at RT
<b>Limitations</b>	This Elastin antibody is available for research use only.



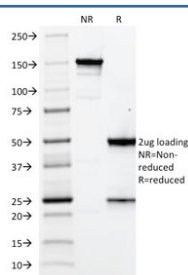
IHC staining of FFPE human angiosarcoma with Elastin antibody (clone ELN/2069).  
HIER: boil tissue sections in pH 9 10mM Tris with 1mM EDTA for 20 min and allow to cool before testing.



IHC staining of FFPE human small intestine with Elastin antibody (clone ELN/2069).  
HIER: boil tissue sections in pH 9 10mM Tris with 1mM EDTA for 20 min and allow to cool before testing.



IHC staining of FFPE human pancreas with Elastin antibody (clone ELN/2069). HIER: boil tissue sections in pH 9 10mM Tris with 1mM EDTA for 20 min and allow to cool before testing.



SDS-PAGE analysis of purified, BSA-free Elastin antibody (clone ELN/2069) as confirmation of integrity and purity.

## Description

Elastin is a polymeric protein and is the main component of the extracellular matrix of arteries. It is synthesized and secreted as a soluble, single-chain protein (tropoelastin), which undergoes a number of post-translational modifications prior to its organization into an elastic fiber in the extracellular space. Elastin performs a regulatory function during arterial development by controlling proliferation of smooth muscle and stabilizing arterial structure. It imparts elasticity to the connective tissue. During aging, the elasticity of connective tissue is reduced because of the cross-linking of collagenous fibers with elastin. The abnormal accumulation of elastic tissue in blood vessels is found in atherosclerosis and hypertension.

## Application Notes

Optimal dilution of the Elastin antibody should be determined by the researcher.

## Immunogen

Recombinant full-length human Elastin protein was used as the immunogen for the Elastin antibody.

## Storage

Store the Elastin antibody at 2-8°C (with azide) or aliquot and store at -20°C or colder (without azide).

