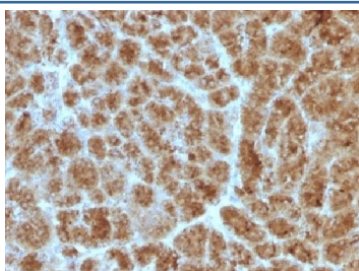


## Elastase 3B Antibody / CELA3B [clone CELA3B/1257] (V3436)

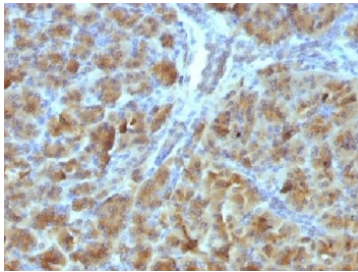
Catalog No.	Formulation	Size
V3436-100UG	0.2 mg/ml in 1X PBS with 0.1 mg/ml BSA (US sourced) and 0.05% sodium azide	100 ug
V3436-20UG	0.2 mg/ml in 1X PBS with 0.1 mg/ml BSA (US sourced) and 0.05% sodium azide	20 ug
V3436SAF-100UG	1 mg/ml in 1X PBS; BSA free, sodium azide free	100 ug

**Bulk quote request**

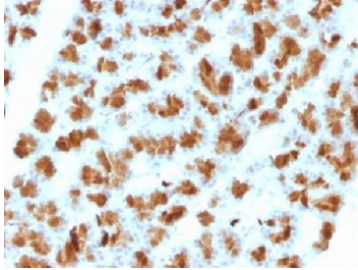
<b>Species Reactivity</b>	Human, Mouse, Rat
<b>Format</b>	Purified
<b>Clonality</b>	Monoclonal (mouse origin)
<b>Isotype</b>	Mouse IgG1, kappa
<b>Clone Name</b>	CELA3B/1257
<b>Purity</b>	Protein G
<b>UniProt</b>	P08861
<b>Localization</b>	Cytoplasmic
<b>Applications</b>	ELISA : 2-4ug/ml (order BSA/azide-free format) Western Blot : 1-2ug/ml Immunohistochemistry (FFPE) : 1-2ug/ml for 30 min at RT
<b>Limitations</b>	This Elastase 3B antibody is available for research use only.



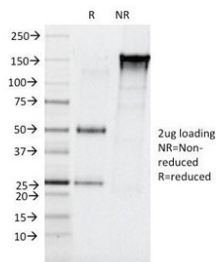
IHC testing of FFPE human pancreas with Elastase 3B antibody (clone CELA3B/1257). Required HIER: boil tissue sections in 10mM Tris with 1mM EDTA, pH 9, for 10-20 min followed by cooling at RT for 20 min.



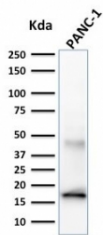
IHC testing of FFPE mouse pancreas with Elastase 3B antibody (clone CELA3B/1257). Required HIER: boil tissue sections in 10mM Tris with 1mM EDTA, pH 9, for 10-20 min followed by cooling at RT for 20 min.



IHC testing of FFPE rat pancreas with Elastase 3B antibody (clone CELA3B/1257). Required HIER: boil tissue sections in 10mM Tris with 1mM EDTA, pH 9, for 10-20 min followed by cooling at RT for 20 min.



SDS-PAGE Analysis of Purified, BSA-Free Elastase 3B Antibody (clone CELA3B/1257). Confirmation of Integrity and Purity of the Antibody.



Western blot of human PANC-1 cell lysate using Elastase 3B antibody (CELA3B/1257). Predicted molecular weight ~29 kDa.

## Description

Elastases form a subfamily of serine proteases that hydrolyze many proteins in addition to elastin. Humans have six genes which encode the structurally similar proteins: Elastase 1, 2, 2A, 2B, 3A, and 3B. Unlike other elastases, 3B has little elastolytic activity. Like most of the human elastases, 3B is secreted from the pancreas as a zymogen and, like other serine proteases such as trypsin, chymotrypsin and kallikrein; it has a digestive function in the intestine. Elastase 3B preferentially cleaves proteins after alanine residues. It may also function in the intestinal transport and metabolism of cholesterol. Elastases 3A/B have been referred to as Protease E and as Elastase 1, and excretion of this protein in fecal material is frequently used as a measure of pancreatic function in clinical assays.

## Application Notes

Optimal dilution of the Elastase 3B antibody should be determined by the researcher.

1. FFPE staining requires

## Immunogen

A partial recombinant protein (aa 82-238) was used as the immunogen for the Elastase 3B antibody.

## Storage

Store the Elastase 3B antibody at 2-8oC (with azide) or aliquot and store at -20oC or colder (without azide).