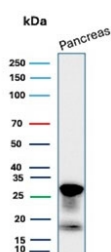


## Elastase 3A Antibody / CELA3A [clone CELA3A/12552] (V5637)

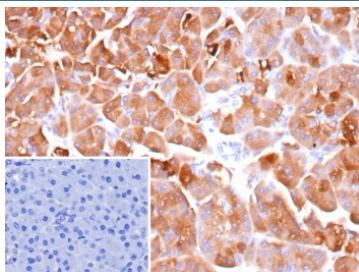
Catalog No.	Formulation	Size
V5637-100UG	0.2 mg/ml in 1X PBS with 0.1 mg/ml BSA (US sourced), 0.05% sodium azide	100 ug
V5637-20UG	0.2 mg/ml in 1X PBS with 0.1 mg/ml BSA (US sourced), 0.05% sodium azide	20 ug
V5637SAF-100UG	1 mg/ml in 1X PBS; BSA free, sodium azide free	100 ug

[Bulk quote request](#)

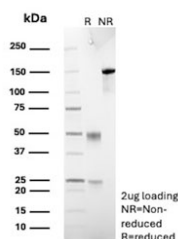
<b>Availability</b>	1-3 business days
<b>Species Reactivity</b>	Human
<b>Format</b>	Purified
<b>Clonality</b>	Monoclonal (mouse origin)
<b>Isotype</b>	Mouse IgG1, kappa
<b>Clone Name</b>	CELA3A/12552
<b>Purity</b>	Protein G affinity
<b>UniProt</b>	P09093
<b>Localization</b>	Cytoplasm, Extracellular space
<b>Applications</b>	Immunohistochemistry (FFPE) : 1-2ug/ml Western Blot : 1-2ug/ml
<b>Limitations</b>	This Elastase 3A antibody is available for research use only.



Western blot testing of human pancreas tissue lysate with Elastase 3A antibody (clone CELA3A/12552). Predicted molecular weight ~29 kDa.



IHC staining of FFPE human pancreas tissue with Elastase 3A antibody (clone CELA3A/12552). Inset: PBS used in place of primary Ab (secondary Ab negative control). HIER: boil tissue sections in pH 9 10mM Tris with 1mM EDTA for 20 min and allow to cool before testing.



SDS-PAGE analysis of purified, BSA-free Elastase 3A antibody (clone CELA3A/12552) as confirmation of integrity and purity.

## Description

Elastases belong to a subfamily of serine proteases that function to catalytically hydrolyze a wide variety of proteins. Elastase-3A, also known as ELA3A or ELA3, is a 270 amino acid protein that belongs to the elastase family and acts as an alanine-specific protease. Secreted as a zymogen from the pancreas, Elastase-3A functions as a digestive enzyme in the intestine that participates in metabolic degradation pathways by preferentially cleaving proteins that have alanine residues. In addition, Elastase-3A is thought to play a role in the metabolism and transport of cholesterol molecules in the intestine. Altered expression of Elastase-3A may be associated with pancreatic ductal carcinoma, a highly fatal cancer of the pancreatic ducts

## Application Notes

Optimal dilution of the Elastase 3A antibody should be determined by the researcher.

## Immunogen

A portion of amino acids 50-250 from human CELA3A protein was used as the immunogen for the Elastase 3A antibody.

## Storage

Aliquot the Elastase 3A antibody and store frozen at -20oC or colder. Avoid repeated freeze-thaw cycles.