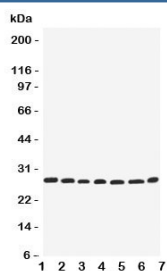


## EIF6 Antibody / Eukaryotic Translation Initiation Factor 6 (R31140)

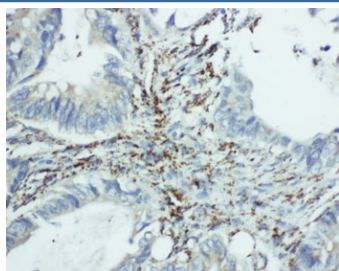
Catalog No.	Formulation	Size
R31140	0.5mg/ml if reconstituted with 0.2ml sterile DI water	100 ug

**Bulk quote request**

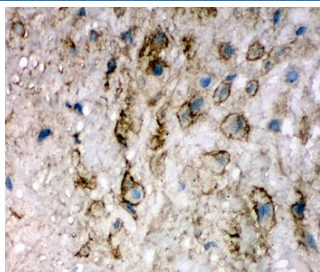
<b>Availability</b>	1-3 business days
<b>Species Reactivity</b>	Human, Mouse, Rat
<b>Format</b>	Antigen affinity purified
<b>Clonality</b>	Polyclonal (rabbit origin)
<b>Isotype</b>	Rabbit IgG
<b>Purity</b>	Antigen affinity
<b>Buffer</b>	Lyophilized from 1X PBS with 2.5% BSA and 0.025% sodium azide/thimerosal
<b>UniProt</b>	P56537
<b>Applications</b>	Western Blot : 0.5-1ug/ml IHC (FFPE) : 0.5-1ug/ml (1) IHC (Frozen) : 0.5-1ug/ml
<b>Limitations</b>	This EIF6 antibody is available for research use only.



Western blot testing of EIF6 antibody; Lane 1: rat liver; 2: (r) kidney; 3: human COLO320; 4: (h) SW620; 5: (h) HeLa; 6: (h) 293T; 7: mouse HEPA cell lysate. Expected molecular weight ~27 kDa.



IHC-P: EIF6 antibody testing of human intestine cancer tissue (1)



IHC-F testing of EIF6 antibody and human placenta tissue

## Description

EIF6 (Eukaryotic Translation Initiation Factor 6), also called ITGB4BP, is a human gene. By fluorescence in situ hybridization, Sanvito et al.(1998) mapped the gene to 20q11.2. Ceci et al.(2003) demonstrated that the ribosomal 60S subunit is activated by release of EIF6. In the cytoplasm, it is bound to free 60S but not to 80S subunits. Furthermore, the protein interacts in the cytoplasm with RACK1, a receptor for activated protein kinase C. Gandin et al.(2008) demonstrated that the protein is required for efficient initiation of translation in vivo. Null mouse embryos were lethal at preimplantation. Heterozygous mice had 50% reduction of EIF6 levels in all tissues, and showed reduced mass of hepatic and adipose tissues due to a lower number of cells and to impaired G1/S cell cycle progression.

## Application Notes

The stated application concentrations are suggested starting amounts. Titration of the EIF6 antibody may be required due to differences in protocols and secondary/substrate sensitivity.

1. Required HIER for FFPE samples: Boil the paraffin sections in pH 6, 10mM citrate buffer for 20 minutes and allow to cool prior to testing.

## Immunogen

An amino acid sequence from the middle region of human Eukaryotic Translation Initiation Factor 6 (QHIRNSLPDTVQIRR) was used as the immunogen for this EIF6 antibody.

## Storage

After reconstitution, the EIF6 antibody can be stored for up to one month at 4°C. For long-term, aliquot and store at -20°C. Avoid repeated freezing and thawing.