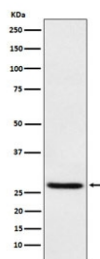


## EIF4E Antibody [clone AFHI-5] (RQ5157)

Catalog No.	Formulation	Size
RQ5157	Antibody in PBS with 0.02% sodium azide, 50% glycerol and 0.4-0.5mg/ml BSA	100 ul

[Bulk quote request](#)

Availability	1-2 weeks
Species Reactivity	Human
Format	Purified
Clonality	Rabbit Monoclonal
Isotype	Rabbit IgG
Clone Name	AFHI-5
Purity	Affinity purified
UniProt	P06730
Applications	Western Blot : 1:100-1:5000
Limitations	This EIF4E antibody is available for research use only.



Western blot testing of human HEK293 cell lysate with EIF4E antibody. Predicted molecular weight ~27 kDa.

### Description

eIF4E, a protein modulates translation of maternal mRNAs in early embryos before the onset of zygotic transcription. eIF4E also influences the overall rate of translation. eIF4E binds to the 7 methyl GTP cap structure of eukaryotic mRNAs. Phosphorylation of eIF4E on serine 209 regulates the affinity of this protein for the 7 methyl GTP cap and/or RNA. Phosphorylation also enhances the interaction of eIF4E with eIF4G, which form a complex known as eIF4F. eIF4E phosphorylation is correlated with increased translational rate in a number of cell types.

### Application Notes

Optimal dilution of the EIF4E antibody should be determined by the researcher.

## **Immunogen**

A synthetic peptide specific to human EIF4E was used as the immunogen for the EIF4E antibody.

## **Storage**

Store the EIF4E antibody at -20oC.