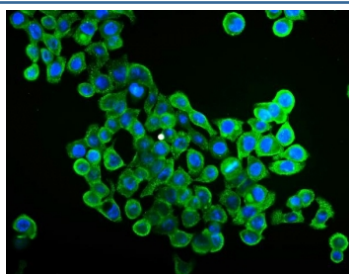


EIF4A1 Antibody [clone 11B8] (RQ6226)

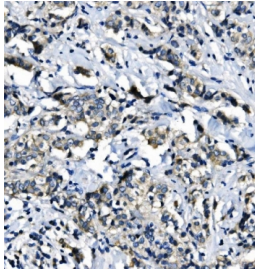
Catalog No.	Formulation	Size
RQ6226	0.5mg/ml if reconstituted with 0.2ml sterile DI water	100 ug

Bulk quote request

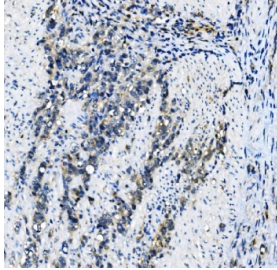
Availability	1-3 business days
Species Reactivity	Human, Mouse, Rat
Format	Antigen affinity purified
Clonality	Monoclonal (mouse origin)
Isotype	Mouse IgG2b
Clone Name	11B8
Purity	Affinity purified
Buffer	Lyophilized from 1X PBS with 2% Trehalose
UniProt	P60842
Localization	Cytoplasmic
Applications	Western Blot : 1-2ug/ml Immunohistochemistry (FFPE) : 2-5ug/ml Immunofluorescence : 5ug/ml Flow Cytometry : 1-3ug/million cells
Limitations	This EIF4A1 antibody is available for research use only.



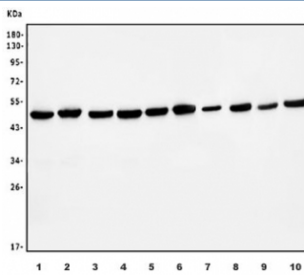
Immunofluorescent staining of FFPE human Caco-2 cells with EIF4A1 antibody (green) and DAPI nuclear stain (blue). HIER: steam section in pH6 citrate buffer for 20 min.



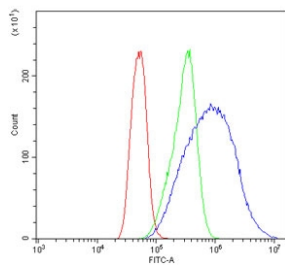
IHC staining of FFPE human breast cancer with EIF4A1 antibody. HIER: boil tissue sections in pH8 EDTA for 20 min and allow to cool before testing.



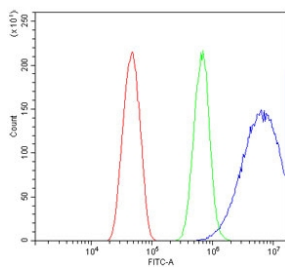
IHC staining of FFPE human gastric cancer with EIF4A1 antibody. HIER: boil tissue sections in pH8 EDTA for 20 min and allow to cool before testing.



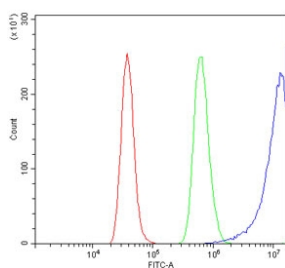
Western blot testing of human 1) HeLa, 2) Jurkat, 3) MCF7, 4) HEK293, 5) HepG2, 6) K562, 7) rat PC-12, 8) mouse spleen, 9) mouse lung and 10) mouse RAW264.7 cell lysate with EIF4A1 antibody. Predicted molecular weight ~46 kDa.



Flow cytometry testing of human Caco-2 cells with EIF4A1 antibody at 1ug/million cells (blocked with goat sera); Red=cells alone, Green=isotype control, Blue= EIF4A1 antibody.



Flow cytometry testing of mouse HEPA1-6 cells with EIF4A1 antibody at 1ug/million cells (blocked with goat sera); Red=cells alone, Green=isotype control, Blue= EIF4A1 antibody.



Flow cytometry testing of rat RH35 cells with EIF4A1 antibody at 1ug/million cells (blocked with goat sera); Red=cells alone, Green=isotype control, Blue= EIF4A1 antibody.

Eukaryotic initiation factor 4A-I is a protein that in humans is encoded by the EIF4A1 gene. It is mapped to 17p13.1. EIF4A1 has been shown to interact with EIF4E and eukaryotic translation initiation factor 4 gamma.

Application Notes

Optimal dilution of the EIF4A1 antibody should be determined by the researcher.

Immunogen

Amino acids LQQIELDLKATQALVLA from the human protein were used as the immunogen for the EIF4A1 antibody.

Storage

After reconstitution, the EIF4A1 antibody can be stored for up to one month at 4°C. For long-term, aliquot and store at -20°C. Avoid repeated freezing and thawing.