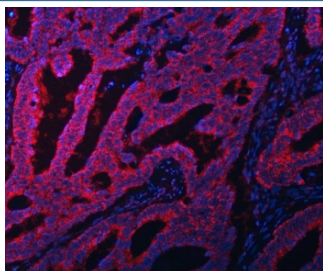


EIF3A Antibody / Eukaryotic translation initiation factor 3 subunit A (RQ7226)

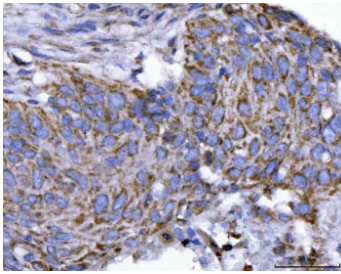
Catalog No.	Formulation	Size
RQ7226	0.5mg/ml if reconstituted with 0.2ml sterile DI water	100 ug

[Bulk quote request](#)

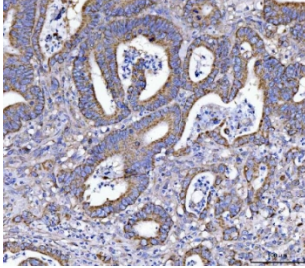
Availability	1-3 business days
Species Reactivity	Human, Mouse, Rat
Format	Antigen affinity purified
Clonality	Polyclonal (rabbit origin)
Isotype	Rabbit IgG
Purity	Antigen affinity purified
Buffer	Lyophilized from 1X PBS with 2% Trehalose
UniProt	Q14152
Localization	Cytoplasmic
Applications	Western Blot : 0.5-1ug/ml Immunohistochemistry (FFPE) : 2-5ug/ml Flow Cytometry : 1-3ug/million cells Direct ELISA : 0.1-0.5ug/ml
Limitations	This EIF3A antibody is available for research use only.



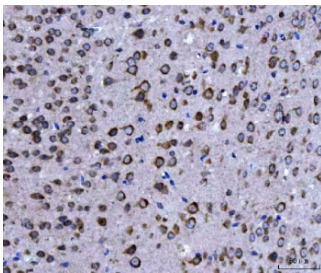
Immunofluorescent staining of FFPE human intestinal cancer tissue with EIF3A antibody (red) and DAPI nuclear stain (blue). HIER: steam section in pH8 EDTA buffer for 20 min.



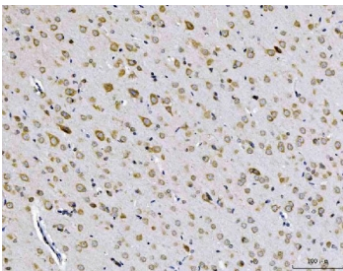
IHC staining of FFPE human esophageal squamous carcinoma tissue with EIF3A antibody. HIER: boil tissue sections in pH8 EDTA for 20 min and allow to cool before testing.



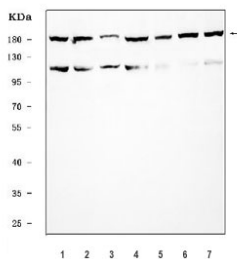
IHC staining of FFPE human colorectal adenocarcinoma tissue with EIF3A antibody. HIER: boil tissue sections in pH8 EDTA for 20 min and allow to cool before testing.



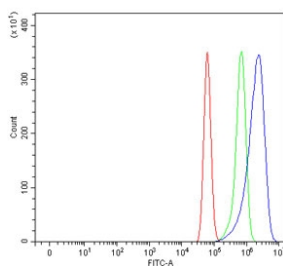
IHC staining of FFPE mouse brain tissue with EIF3A antibody. HIER: boil tissue sections in pH8 EDTA for 20 min and allow to cool before testing.



IHC staining of FFPE rat brain tissue with EIF3A antibody. HIER: boil tissue sections in pH8 EDTA for 20 min and allow to cool before testing.



Western blot testing of 1) human PC-3, 2) human 293T, 3) human MOLT4, 4) rat C6, 5) rat L6, 6) mouse RAW264.7 and 7) mouse ANA-1 cell lysate with EIF3A antibody. Predicted molecular weight ~166 kDa.



Flow cytometry testing of human U-87 MG cells with EIF3A antibody at 1ug/million cells (blocked with goat sera); Red=cells alone, Green=isotype control, Blue= EIF3A antibody.

Description

Eukaryotic translation initiation factor 3 subunit A (eIF3a) is a protein that in humans is encoded by the EIF3A gene. Enables RNA binding activity. Contributes to translation initiation factor activity. Involved in IRES-dependent viral translational initiation; formation of cytoplasmic translation initiation complex; and viral translational termination-reinitiation. Located in cytosol; nucleolus; and nucleoplasm. Part of eukaryotic translation initiation factor 3 complex.

Application Notes

Optimal dilution of the EIF3A antibody should be determined by the researcher.

Immunogen

Recombinant human protein (amino acids K13-H477) was used as the immunogen for the EIF3A antibody.

Storage

After reconstitution, the EIF3A antibody can be stored for up to one month at 4oC. For long-term, aliquot and store at -20oC. Avoid repeated freezing and thawing.