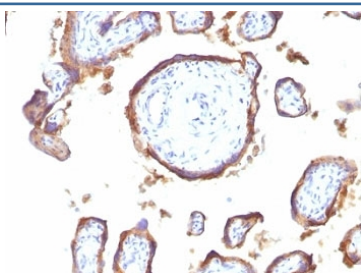


EGFR Antibody [clone GFR1195] (V2487)

Catalog No.	Formulation	Size
V2487-100UG	0.2 mg/ml in 1X PBS with 0.1 mg/ml BSA (US sourced) and 0.05% sodium azide	100 ug
V2487-20UG	0.2 mg/ml in 1X PBS with 0.1 mg/ml BSA (US sourced) and 0.05% sodium azide	20 ug
V2487SAF-100UG	1 mg/ml in 1X PBS; BSA free, sodium azide free	100 ug
V2487IHC-7ML	Prediluted in 1X PBS with 0.1 mg/ml BSA (US sourced) and 0.05% sodium azide; *For IHC use only*	7 ml

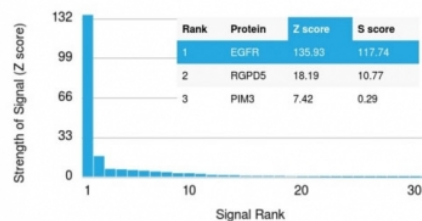
Bulk quote request

Availability	1-3 business days
Species Reactivity	Human
Format	Purified
Clonality	Monoclonal (mouse origin)
Isotype	Mouse IgG2a, kappa
Clone Name	GFR1195
Purity	Protein G affinity chromatography
UniProt	P00533
Localization	Cell surface
Applications	Immunohistochemistry (FFPE) : 2-4ug/ml for 30 min at RT
Limitations	This EGFR antibody is available for research use only.

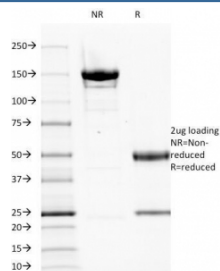


IHC: Formalin-fixed, paraffin-embedded human placenta stained with EGFR antibody (clone GFR1195).

Human Protein Microarray Specificity Validation



Analysis of HuProt(TM) microarray containing more than 19,000 full-length human proteins using EGFR antibody (clone GFR1195). These results demonstrate the foremost specificity of the GFR1195 mAb. Z- and S- score: The Z-score represents the strength of a signal that an antibody (in combination with a fluorescently-tagged anti-IgG secondary Ab) produces when binding to a particular protein on the HuProt(TM) array. Z-scores are described in units of standard deviations (SD's) above the mean value of all signals generated on that array. If the targets on the HuProt(TM) are arranged in descending order of the Z-score, the S-score is the difference (also in units of SD's) between the Z-scores. The S-score therefore represents the relative target specificity of an Ab to its intended target.



SDS-PAGE analysis of purified, BSA-free EGFR antibody (clone GFR1195) as confirmation of integrity and purity.

Description

This mAb recognizes a protein of 170kDa, identified as EGFR. EGFR is type I receptor tyrosine kinase with sequence homology to erbB-1, -2, -3 -4 or HER-1, -2, -3 -4. It binds to Epidermal Growth Factor (EGF), Transforming Growth Factor- α (TGF- α), Heparin-binding EGF (HB-EGF), amphiregulin, betacellulin and epiregulin. EGFR is overexpressed in tumors of breast, brain, bladder, lung, gastric, head & neck, esophagus, cervix, vulva, ovary, and endometrium. It is predominantly present in squamous cell carcinomas.

Application Notes

Optimal dilution of the EGFR antibody should be determined by the researcher.

1. Digest formalin-fixed tissues with Protease at 1mg/ml PBS, pH 7.4 for 10 min at 37°C.
2. The prediluted format is supplied in a dropper bottle and is optimized for use in IHC. After epitope retrieval step (if required), drip mAb solution onto the tissue section and incubate at RT for 30 min.

Immunogen

Recombinant human EGF Receptor protein was used as the immunogen for the EGFR antibody.

Storage

Store the EGFR antibody at 2-8°C (with azide) or aliquot and store at -20°C or colder (without azide).

