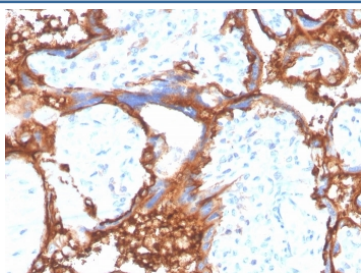


## EGF Receptor / EGFR Antibody (C-terminal region) [clone EGFR/4575] (V9263)

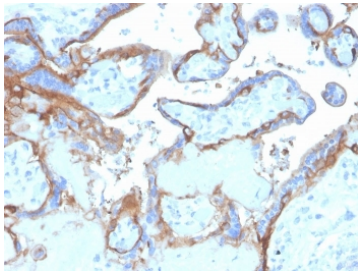
Catalog No.	Formulation	Size
V9263-100UG	0.2 mg/ml in 1X PBS with 0.1 mg/ml BSA (US sourced), 0.05% sodium azide	100 ug
V9263-20UG	0.2 mg/ml in 1X PBS with 0.1 mg/ml BSA (US sourced), 0.05% sodium azide	20 ug
V9263SAF-100UG	1 mg/ml in 1X PBS; BSA free, sodium azide free	100 ug

### Bulk quote request

Availability	1-3 business days
Species Reactivity	Human
Format	Purified
Clonality	Monoclonal (mouse origin)
Isotype	Mouse IgG1, kappa
Clone Name	EGFR/4575
Purity	Protein A/G affinity
UniProt	P00533
Localization	Cell Surface
Applications	Western Blot : 2-4ug/ml Immunohistochemistry (FFPE) : 1-2ug/ml
Limitations	This EGF Receptor antibody is available for research use only.

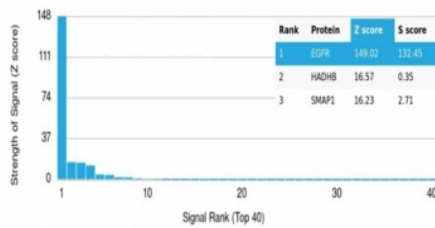


IHC staining of FFPE human placental tissue with EGF Receptor antibody (clone EGFR/4575). HIER: boil tissue sections in pH 9 10mM Tris with 1mM EDTA for 20 min and allow to cool before testing.

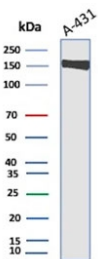


IHC staining of FFPE human placental tissue with EGF Receptor antibody (clone EGFR/4575). HIER: boil tissue sections in pH 9 10mM Tris with 1mM EDTA for 20 min and allow to cool before testing.

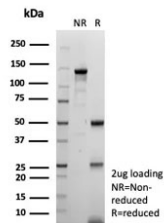
Human Protein Microarray Specificity Validation



Analysis of HuProt(TM) microarray containing more than 19,000 full-length human proteins using EGF Receptor antibody (clone EGFR/4575). These results demonstrate the foremost specificity of the EGFR/4575 mAb. Z- and S- score: The Z-score represents the strength of a signal that an antibody (in combination with a fluorescently-tagged anti-IgG secondary Ab) produces when binding to a particular protein on the HuProt(TM) array. Z-scores are described in units of standard deviations (SD's) above the mean value of all signals generated on that array. If the targets on the HuProt(TM) are arranged in descending order of the Z-score, the S-score is the difference (also in units of SD's) between the Z-scores. The S-score therefore represents the relative target specificity of an Ab to its intended target.



Western blot testing of human A431 cell lysate with EGF Receptor antibody. Expected molecular weight: 134-180 kDa depending on glycosylation level.



SDS-PAGE analysis of purified, BSA-free EGF Receptor antibody (clone EGFR/4575) as confirmation of integrity and purity.

## Description

This MAb recognizes a protein of 170kDa, identified as EGFR. EGFR is type I receptor tyrosine kinase with sequence homology to erbB-1, -2, -3 -4 or HER-1, -2, -3 -4. It binds to Epidermal Growth Factor (EGF), Transforming Growth Factor- $\alpha$  (TGF- $\alpha$ ), Heparin-binding EGF (HB-EGF), amphiregulin, betacellulin and epiregulin. EGFR is overexpressed in tumors of breast, brain, bladder, lung, gastric, head neck, esophagus, cervix, vulva, ovary, and endometrium. It is predominantly present in squamous cell carcinomas.

## Application Notes

Optimal dilution of the EGF Receptor antibody should be determined by the researcher.

## Immunogen

A portion of amino acids 1163-1191 from the C-terminal region of human EGFR was used as the immunogen for the EGF Receptor antibody.

## Storage

Aliquot the EGF Receptor antibody and store frozen at -20oC or colder. Avoid repeated freeze-thaw cycles.