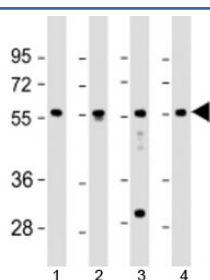


## EFS Antibody (F53841)

Catalog No.	Formulation	Size
F53841-0.2ML	In 1X PBS, pH 7.4, with 0.09% sodium azide	0.2 ml
F53841-0.05ML	In 1X PBS, pH 7.4, with 0.09% sodium azide	0.05 ml

[Bulk quote request](#)

<b>Availability</b>	1-3 business days
<b>Species Reactivity</b>	Human
<b>Format</b>	Antigen affinity purified
<b>Clonality</b>	Polyclonal (rabbit origin)
<b>Isotype</b>	Rabbit Ig
<b>Purity</b>	Antigen affinity
<b>UniProt</b>	O43281
<b>Applications</b>	Western Blot : 1:1000-1:2000
<b>Limitations</b>	This EFS antibody is available for research use only.



Western blot testing of human 1) fetal liver, 2) lung, 3) Jurkat and 4) K562 cell lysate with EFS antibody at 1:2000. Predicted molecular weight: 59 kDa.

## Description

Embryonal Fyn-associated substrate is a docking protein which plays a central coordinating role for tyrosine-kinase-based signaling related to cell adhesion. May serve as an activator of SRC and a downstream effector. Interacts with the SH3 domain of FYN and with CRK, SRC, and YES (By similarity).

## Application Notes

Titration of the EFS antibody may be required due to differences in protocols and secondary/substrate sensitivity.

## Immunogen

A portion of amino acids 367-399 from the human protein was used as the immunogen for the EFS antibody.

## Storage

Aliquot the EFS antibody and store frozen at -20oC or colder. Avoid repeated freeze-thaw cycles.