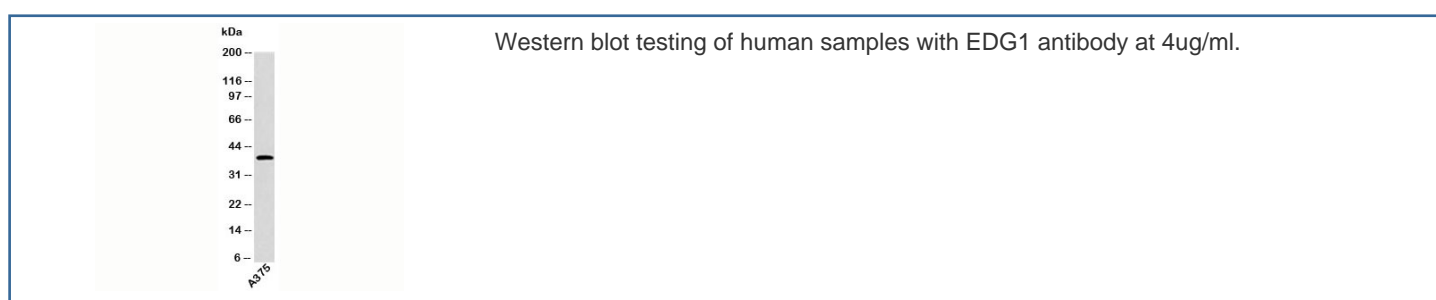


## EDG1 Antibody (N1039)

Catalog No.	Formulation	Size
N1039-100UG	0.5 mg/ml in 1X PBS with 0.1 mg/ml BSA (US sourced), 0.05% sodium azide	100 ug
N1039-25UG	0.5 mg/ml in 1X PBS with 0.1 mg/ml BSA (US sourced), 0.05% sodium azide	25 ug

[Bulk quote request](#)

Species Reactivity	Human, Mouse, Rat
Format	Purified
Clonality	Polyclonal (rabbit origin)
Isotype	Rabbit IgG
Purity	Protein A affinity chromatography
Buffer	1X PBS, pH 7.4
Gene ID	1901
Applications	Western Blot : 4-6ug/ml
Limitations	This <b>EDG1 antibody</b> is available for research use only.



## Description

EDG1 (Endothelial differentiation gene 1), also called Sphingosine-1-phosphate receptor 1 (S1PR1) is the G-protein coupled receptor for Sphingosine 1-phosphate (S1P). Via its interaction with S1P, EDG1 is involved in a number of cellular processes. The binding of S1P leads to angiogenesis and tumor cell motility in cancer, and this interaction also participates in the formation of cell-cell adherens junctions. During embryogenesis, it regulates vascularization. EDG1 interacts with the serotonin receptor 5-HT1AR in the central nervous system. It is also a regulator of innate and adaptive immunity by signaling the release of T-cells from lymph nodes.

## Application Notes

Provided assay concentrations are suggestions only, EDG1 antibody titration may be required for optimal results.

## Immunogen

A recombinant protein fragment from the C-terminal portion of human EDG1 was used as the immunogen for this antibody.

## Storage

Aliquot the EDG1 antibody and store frozen at -20oC or colder. Avoid repeated freeze-thaw cycles.

## Alternate Names

Endothelial differentiation G protein coupled receptor 1, CD363, Sphingosine 1 phosphate receptor, S1PR1 antibody

## References (2)