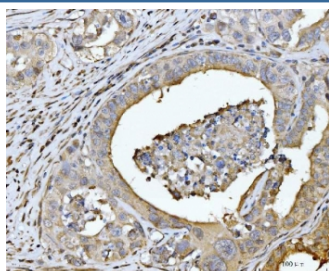


EDEM3 Antibody (RQ6618)

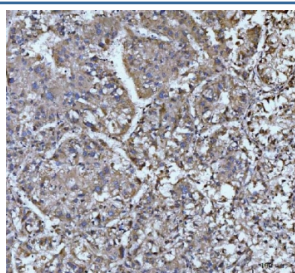
Catalog No.	Formulation	Size
RQ6618	0.5mg/ml if reconstituted with 0.2ml sterile DI water	100 ug

Bulk quote request

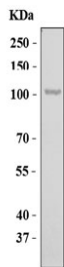
Availability	1-3 business days
Species Reactivity	Human
Format	Antigen affinity purified
Clonality	Polyclonal (rabbit origin)
Isotype	Rabbit IgG
Purity	Antigen affinity purified
Buffer	Lyophilized from 1X PBS with 2% Trehalose
UniProt	Q9BZQ6
Applications	Western Blot : 1-2ug/ml Immunohistochemistry (FFPE) : 2-5ug/ml Direct ELISA : 0.1-0.5ug/ml
Limitations	This EDEM3 antibody is available for research use only.



IHC staining of FFPE human appendiceal adenocarcinoma tissue with EDEM3 antibody. HIER: boil tissue sections in pH8 EDTA for 20 min and allow to cool before testing.



IHC staining of FFPE human liver cancer tissue with EDEM3 antibody. HIER: boil tissue sections in pH8 EDTA for 20 min and allow to cool before testing.



Western blot testing of human K562 cell lysate with EDEM3 antibody. Predicted molecular weight ~105 kDa.

Description

ER degradation-enhancing alpha-mannosidase-like 3 is an enzyme that in humans is encoded by the EDEM3 gene. Quality control in the endoplasmic reticulum (ER) ensures that only properly folded proteins are retained in the cell through recognition and degradation of misfolded or unassembled proteins. EDEM3 belongs to a group of proteins that accelerate degradation of misfolded glycoproteins in the ER.

Application Notes

Optimal dilution of the EDEM3 antibody should be determined by the researcher.

Immunogen

Recombinant human protein (amino acids N54-D795) was used as the immunogen for the EDEM3 antibody.

Storage

After reconstitution, the EDEM3 antibody can be stored for up to one month at 4°C. For long-term, aliquot and store at -20°C. Avoid repeated freezing and thawing.