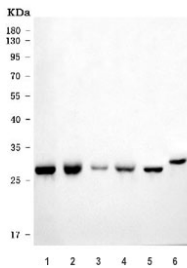


ECCH1 Antibody / Enoyl-CoA hydratase 1 (RQ7225)

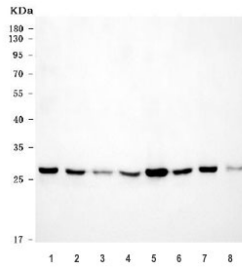
Catalog No.	Formulation	Size
RQ7225	0.5mg/ml if reconstituted with 0.2ml sterile DI water	100 ug

Bulk quote request

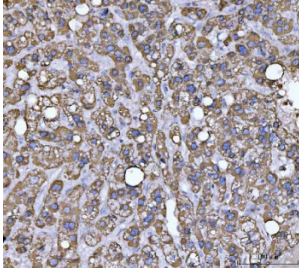
Availability	1-3 business days
Species Reactivity	Human, Mouse, Rat
Format	Antigen affinity purified
Clonality	Polyclonal (rabbit origin)
Isotype	Rabbit IgG
Purity	Antigen affinity purified
Buffer	Lyophilized from 1X PBS with 2% Trehalose
UniProt	P30084
Localization	Cytoplasmic (mitochondria)
Applications	Western Blot : 0.5-1ug/ml Immunohistochemistry (FFPE) : 2-5ug/ml Immunofluorescence : 5ug/ml Flow Cytometry : 1-3ug/million cells Direct ELISA : 0.1-0.5ug/ml
Limitations	This ECCH1 antibody is available for research use only.



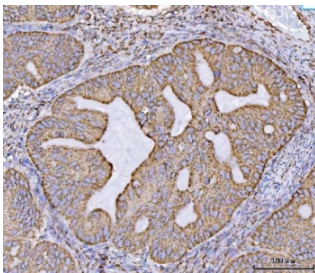
Western blot testing of 1) rat liver, 2) rat kidney, 3) rat RH35, 4) mouse liver, 5) mouse kidney and 6) mouse HEPA(1-6) cell lysate with ECCH1 antibody. Predicted molecular weight ~31 kDa, commonly observed at 27-31 kDa.



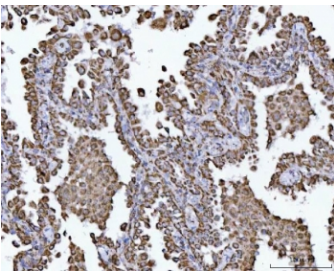
Western blot testing of human 1) HepG2, 2) HeLa, 3) HT1080, 4) 293T, 5) MCF7, 6) U-87 MG, 7) Caco-2 and 8) PC-3 cell lysate with ECHS1 antibody. Predicted molecular weight ~31 kDa, commonly observed at 27-31 kDa.



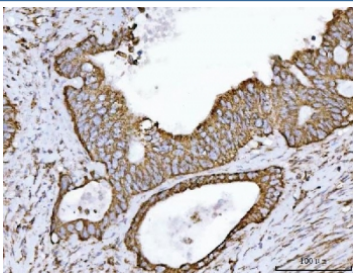
IHC staining of FFPE human liver cancer tissue with ECHS1 antibody. HIER: boil tissue sections in pH8 EDTA for 20 min and allow to cool before testing.



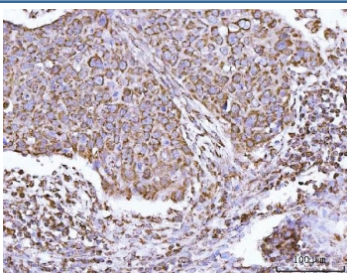
IHC staining of FFPE human ovarian cancer tissue with ECHS1 antibody. HIER: boil tissue sections in pH8 EDTA for 20 min and allow to cool before testing.



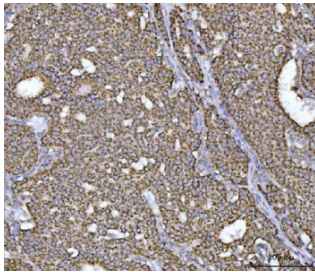
IHC staining of FFPE human lung cancer tissue with ECHS1 antibody. HIER: boil tissue sections in pH8 EDTA for 20 min and allow to cool before testing.



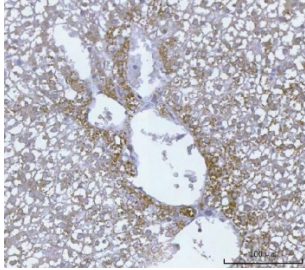
IHC staining of FFPE human colorectal adenocarcinoma tissue with ECHS1 antibody. HIER: boil tissue sections in pH8 EDTA for 20 min and allow to cool before testing.



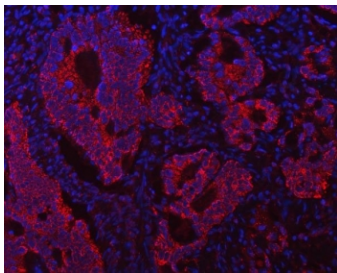
IHC staining of FFPE human esophageal squamous carcinoma tissue with ECHS1 antibody. HIER: boil tissue sections in pH8 EDTA for 20 min and allow to cool before testing.



IHC staining of FFPE human breast cancer tissue with ECHS1 antibody. HIER: boil tissue sections in pH8 EDTA for 20 min and allow to cool before testing.



IHC staining of FFPE rat liver tissue with ECHS1 antibody. HIER: boil tissue sections in pH8 EDTA for 20 min and allow to cool before testing.



Immunofluorescent staining of FFPE human intestinal cancer tissue with ECHS1 antibody (red) and DAPI nuclear stain (blue). HIER: steam section in pH8 EDTA buffer for 20 min.

Description

Enoyl Coenzyme A hydratase, short chain, 1, mitochondrial, also known as ECHS1, is a human gene. The protein encoded by this gene functions in the second step of the mitochondrial fatty acid beta-oxidation pathway. It catalyzes the hydration of 2-trans-enoyl-coenzyme A (CoA) intermediates to L-3-hydroxyacyl-CoAs. The gene product is a member of the hydratase/isomerase superfamily. It localizes to the mitochondrial matrix. Transcript variants utilizing alternative transcription initiation sites have been described in the literature.

Application Notes

Optimal dilution of the ECHS1 antibody should be determined by the researcher.

Immunogen

Recombinant human protein (amino acids R12-Q290) was used as the immunogen for the ECHS1 antibody.

Storage

After reconstitution, the ECHS1 antibody can be stored for up to one month at 4oC. For long-term, aliquot and store at -20oC. Avoid repeated freezing and thawing.

