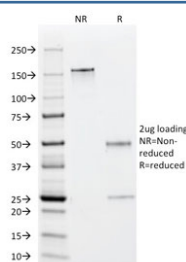


## EBV Early Antigens Antibody [clone 1108-1] (V2334)

Catalog No.	Formulation	Size
V2334-100UG	0.2 mg/ml in 1X PBS with 0.1 mg/ml BSA (US sourced) and 0.05% sodium azide	100 ug
V2334-20UG	0.2 mg/ml in 1X PBS with 0.1 mg/ml BSA (US sourced) and 0.05% sodium azide	20 ug
V2334SAF-100UG	1 mg/ml in 1X PBS; BSA free, sodium azide free	100 ug

[Bulk quote request](#)

<b>Species Reactivity</b>	Epstein-Barr Virus
<b>Format</b>	Purified
<b>Clonality</b>	Monoclonal (mouse origin)
<b>Isotype</b>	Mouse IgG1, kappa
<b>Clone Name</b>	1108-1
<b>Purity</b>	Protein G purified antibody
<b>Buffer</b>	1X PBS, pH 7.4
<b>Gene ID</b>	Not Applicable
<b>Localization</b>	Nuclear
<b>Applications</b>	Immunofluorescence : 0.5-1ug/ml
<b>Limitations</b>	This <b>EBV Early Antigens antibody</b> is available for research use only.



SDS-PAGE analysis of purified, BSA-free EBV Early Antigens antibody (clone 1108-1) as confirmation of integrity and purity.

## Description

Epstein-Barr virus (EBV), also designated human herpesvirus 4 (HHV-4), is a member of the herpesvirus family and is one of the most common human viruses. EBV infects B cells and, though often asymptomatic, it can cause infectious

mononucleosis, a disease characterized by fatigue, fever, sore throat and muscle soreness. The EBV-induced early antigens (Ea) are among several antigen complexes that have been identified in EBV-infected cells. The Ea complex is composed of diffuse (EaD) and restricted (EaR) components. The activity of EaD is suppressed during latent infection. BMRF1, the gene that encodes for EaD, is closely associated with the gene encoding for EBV DNA polymerase, and EaD is essential for the activity of this polymerase. EaD forms a complex with EBV DNase and, together, they may play a role in viral replication.

## Application Notes

The concentration stated for each application is a general starting point. Variations in protocols, secondaries and substrates may require the Early Antigens antibody to be titrated up or down for optimal performance.

## Immunogen

Affinity purified early antigen polypeptides from induced Raji cells precipitated with African Burkitt's lymphoma sera were used as the immunogen for this Early Antigens antibody.

## Storage

Store the EBV Early Antigens antibody at 2-8°C (with azide) or aliquot and store at -20°C or colder (without azide).

## Alternate Names

EBNA1; EBV nuclear antigen 1; Epstein Barr nuclear antigen 1; Human Herpesvirus 4 (HHV4), Early Antigens Antibody

## References (1)