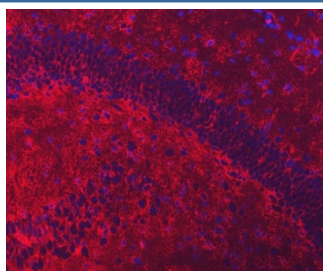


## EAAT2 Antibody (R30166)

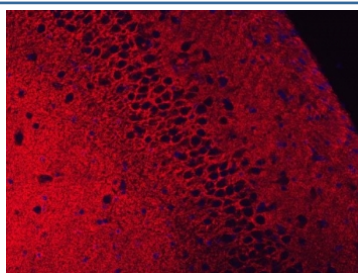
Catalog No.	Formulation	Size
R30166	0.5mg/ml if reconstituted with 0.2ml sterile DI water	100 ug

**Bulk quote request**

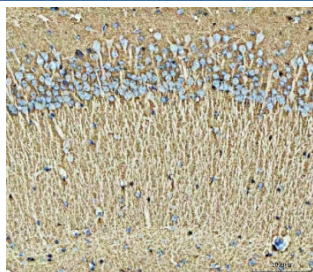
<b>Availability</b>	1-3 business days
<b>Species Reactivity</b>	Mouse, Rat
<b>Format</b>	Antigen affinity purified
<b>Clonality</b>	Polyclonal (rabbit origin)
<b>Isotype</b>	Rabbit IgG
<b>Purity</b>	Antigen affinity
<b>Buffer</b>	Lyophilized from 1X PBS with 2% Trehalose and 0.025% sodium azide
<b>Gene ID</b>	6506
<b>Applications</b>	Western Blot : 0.5-1ug/ml Immunofluorescence : 5ug/ml Immunohistochemistry (FFPE) : 2-5ug/ml
<b>Limitations</b>	This EAAT2 antibody is available for research use only.



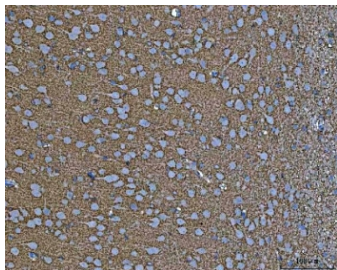
Immunofluorescent staining of FFPE mouse brain tissue with EAAT2 antibody (red) and DAPI nuclear stain (blue). HIER: steam section in pH8 EDTA for 20 min.



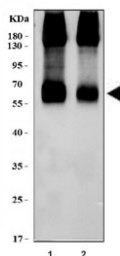
Immunofluorescent staining of FFPE rat brain tissue with EAAT2 antibody (red) and DAPI nuclear stain (blue). HIER: steam section in pH8 EDTA for 20 min.



IHC staining of FFPE mouse brain tissue with EAAT2 antibody. HIER: boil tissue sections in pH8 EDTA for 20 min and allow to cool before testing.



IHC staining of FFPE rat brain tissue with EAAT2 antibody. HIER: boil tissue sections in pH8 EDTA for 20 min and allow to cool before testing.



Western blot testing of 1) rat brain and 2) mouse brain tissue lysate with EAAT2 antibody. Predicted molecular weight ~62 kDa.

## Description

SLC1A2 is also known as EAAT2 or GLT-1. This gene encodes a member of a family of solute transporter proteins. The membrane-bound protein is the principal transporter that clears the excitatory neurotransmitter glutamate from the extracellular space at synapses in the central nervous system. Glutamate clearance is necessary for proper synaptic activation and to prevent neuronal damage from excessive activation of glutamate receptors. Mutations in and decreased expression of this protein are associated with amyotrophic lateral sclerosis. Alternatively spliced transcript variants of this gene have been identified.

## Application Notes

The stated application concentrations are suggested starting amounts. Titration of the EAAT2 antibody may be required due to differences in protocols and secondary/substrate sensitivity.

## Immunogen

Human partial recombinant protein (AA 461-574) was used as the immunogen for this EAAT2 antibody.

## Storage

After reconstitution, the EAAT2 antibody can be stored for up to one month at 4°C. For long-term, aliquot and store at -20°C. Avoid repeated freezing and thawing.

