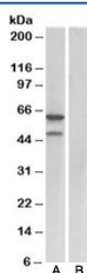


## E2F3 Antibody (R33522)

Catalog No.	Formulation	Size
R33522-100UG	0.5 mg/ml in 1X TBS, pH7.3, with 0.5% BSA (US sourced) and 0.02% sodium azide	100 ug

[Bulk quote request](#)

Availability	1-3 business days
Species Reactivity	Human, Mouse
Predicted Reactivity	Human
Format	Antigen affinity purified
Clonality	Polyclonal (goat origin)
Isotype	Goat Ig
Purity	Antigen affinity
Gene ID	1871
Applications	Western Blot : 1-3ug/ml ELISA (peptide) LOD : 1:8000
Limitations	This E2F3 antibody is available for research use only.



Western blot testing of mouse fetal lung lysate with E2F3 antibody at 1ug/ml with [B] and without [A] blocking/immunizing peptide. Predicted molecular weight: ~49 kDa but can also be observed from 56~66 kDa.

## Description

Additional name(s) for this target protein: E2F transcription factor 3

## Application Notes

Optimal dilution of the E2F3 antibody should be determined by the researcher.

## Immunogen

Amino acids DLEKLPLVEDFMCS were used as the immunogen for this E2F3 antibody.

## Storage

Aliquot and store the E2F3 antibody at -20oC.