

## DOCK4 Antibody / Deducator of cytokinesis protein 4 (RQ7372)

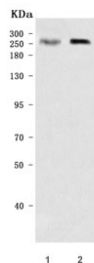
Catalog No.	Formulation	Size
RQ7372	0.5mg/ml if reconstituted with 0.2ml sterile DI water	100 ug

**Bulk quote request**

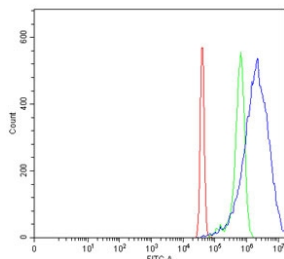
<b>Availability</b>	1-3 business days
<b>Species Reactivity</b>	Human, Rat
<b>Format</b>	Antigen affinity purified
<b>Clonality</b>	Polyclonal (rabbit origin)
<b>Isotype</b>	Rabbit IgG
<b>Purity</b>	Antigen affinity purified
<b>Buffer</b>	Lyophilized from 1X PBS with 2% Trehalose
<b>UniProt</b>	Q8N1I0
<b>Localization</b>	Cytoplasm, cell membrane
<b>Applications</b>	Western Blot : 0.5-1ug/ml Immunohistochemistry (FFPE) : 2-5ug/ml Flow Cytometry : 1-3ug/million cells Direct ELISA : 0.1-0.5ug/ml
<b>Limitations</b>	This DOCK4 antibody is available for research use only.



IHC staining of FFPE human skeletal muscle tissue with DOCK4 antibody. HIER: boil tissue sections in pH8 EDTA for 20 min and allow to cool before testing.



Western blot testing of 1) human 293T and 2) rat L6 cell lysate with DOCK4 antibody. Predicted molecular weight ~225 kDa.



Flow cytometry testing of human SiHa cells with DOCK4 antibody at 1ug/million cells (blocked with goat sera); Red=cells alone, Green=isotype control, Blue= DOCK4 antibody.

## Description

This gene is a member of the dedicator of cytokinesis (DOCK) family and encodes a protein with a DHR-1 (CZH-1) domain, a DHR-2 (CZH-2) domain and an SH3 domain. This membrane-associated, cytoplasmic protein functions as a guanine nucleotide exchange factor and is involved in regulation of adherens junctions between cells. Mutations in this gene have been associated with ovarian, prostate, glioma, and colorectal cancers. Alternatively spliced variants which encode different protein isoforms have been described, but only one has been fully characterized.

## Application Notes

Optimal dilution of the DOCK4 antibody should be determined by the researcher.

## Immunogen

Recombinant human protein (amino acids K191-I1837) was used as the immunogen for the DOCK4 antibody.

## Storage

After reconstitution, the DOCK4 antibody can be stored for up to one month at 4oC. For long-term, aliquot and store at -20oC. Avoid repeated freezing and thawing.