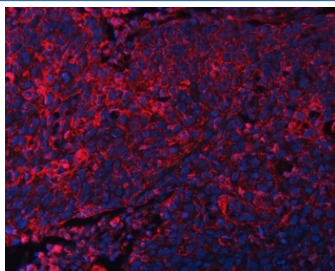


DOCK1 Antibody (RQ7519)

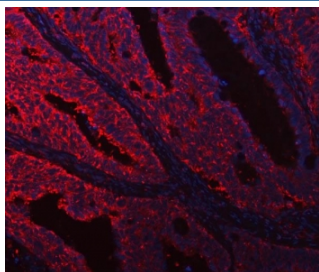
Catalog No.	Formulation	Size
RQ7519	0.5mg/ml if reconstituted with 0.2ml sterile DI water	100 ug

Bulk quote request

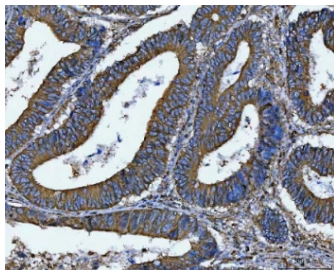
Availability	1-3 business days
Species Reactivity	Human
Format	Antigen affinity purified
Clonality	Polyclonal (rabbit origin)
Isotype	Rabbit IgG
Purity	Antigen affinity purified
Buffer	Lyophilized from 1X PBS with 2% Trehalose
UniProt	Q14185
Localization	Cytoplasmic
Applications	Western Blot : 0.5-1ug/ml Immunohistochemistry (FFPE) : 2-5ug/ml Flow Cytometry : 1-3ug/million cells Immunofluorescence : 5ug/ml Direct ELISA : 0.1-0.5ug/ml
Limitations	This DOCK1 antibody is available for research use only.



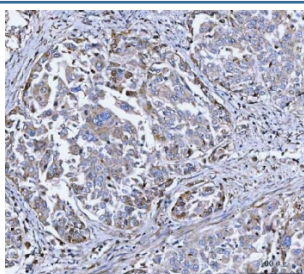
Immunofluorescent staining of FFPE human esophageal squamous cell carcinoma tissue with DOCK1 antibody (red) and DAPI nuclear stain (blue). HIER: boil tissue sections in pH8 EDTA for 20 min and allow to cool before testing.



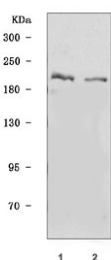
Immunofluorescent staining of FFPE human intestinal cancer tissue with DOCK1 antibody (red) and DAPI nuclear stain (blue). HIER: boil tissue sections in pH8 EDTA for 20 min and allow to cool before testing.



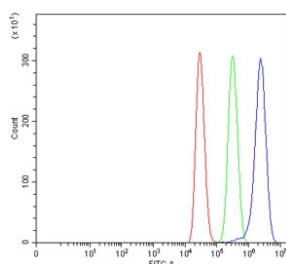
IHC staining of FFPE human colorectal adenocarcinoma tissue with DOCK1 antibody. HIER: boil tissue sections in pH8 EDTA for 20 min and allow to cool before testing.



IHC staining of FFPE human lung adenocarcinoma tissue with DOCK1 antibody. HIER: boil tissue sections in pH8 EDTA for 20 min and allow to cool before testing.



Western blot testing of human 1) 293T and 2) MCF7 cell lysate with DOCK1 antibody. Predicted molecular weight: 215 kDa, routinely observed at 180~215 kDa.



Flow cytometry testing of human MCF7 cells with DOCK1 antibody at 1ug/million cells (blocked with goat sera); Red=cells alone, Green=isotype control, Blue= DOCK1 antibody.

Description

Dock180, (Dedicator of cytokinesis) also known as DOCK1, is a large (~180 kDa) protein involved in intracellular signalling networks. This gene encodes a member of the dedicator of cytokinesis protein family. Dedicator of cytokinesis proteins act as guanine nucleotide exchange factors for small Rho family G proteins. The encoded protein regulates the small GTPase Rac, thereby influencing several biological processes, including phagocytosis and cell migration. Overexpression of this gene has also been associated with certain cancers. Alternative splicing results in multiple transcript variants.

Application Notes

Optimal dilution of the DOCK1 antibody should be determined by the researcher.

Immunogen

E. coli-derived recombinant human protein (amino acids S100-T1732) was used as the immunogen for the DOCK1 antibody.

Storage

After reconstitution, the DOCK1 antibody can be stored for up to one month at 4oC. For long-term, aliquot and store at -20oC. Avoid repeated freezing and thawing.