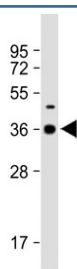


DNASE1L3 Antibody / Deoxyribonuclease gamma (F55118)

Catalog No.	Formulation	Size
F55118-0.4ML	In 1X PBS, pH 7.4, with 0.09% sodium azide	0.4 ml
F55118-0.08ML	In 1X PBS, pH 7.4, with 0.09% sodium azide	0.08 ml

[Bulk quote request](#)

Availability	1-3 business days
Species Reactivity	Rat
Format	Antigen affinity purified
Clonality	Polyclonal (rabbit origin)
Isotype	Rabbit Ig
Purity	Antigen affinity
UniProt	Q13609
Applications	Western Blot : 1:1000-1:2000
Limitations	This DNASE1L3 antibody is available for research use only.



Western blot testing of rat spleen tissue lysate with DNASE1L3 antibody. Predicted molecular weight ~36 kDa.

Description

DNASE1L3 is a member of the deoxyribonuclease enzyme family, responsible for breaking down DNA molecules into smaller fragments. This process is essential for the clearance of cellular debris, including dying cells and extracellular DNA released during inflammation. Without the action of DNASE1L3, the accumulation of DNA waste can lead to autoimmune diseases and other inflammatory conditions. Research has shown that DNASE1L3 plays a key role in modulating immune responses and protecting against inflammatory damage. By efficiently clearing DNA debris, this enzyme helps to maintain the balance between immunity and tolerance in the body. Dysregulation of DNASE1L3 activity has been linked to various autoimmune disorders, highlighting the importance of this enzyme in immune homeostasis. Furthermore, DNASE1L3 has been identified as a potential therapeutic target for treating autoimmune diseases and

inflammatory conditions. By enhancing the activity of this enzyme, researchers hope to restore immune balance and prevent the development of autoimmune reactions.

Application Notes

The stated application concentrations are suggested starting amounts. Titration of the DNASE1L3 antibody may be required due to differences in protocols and secondary/substrate sensitivity.

Immunogen

A portion of amino acids 14-43 from the human protein was used as the immunogen for this DNASE1L3 antibody.

Storage

Store at 4oC for up to one month. For long term, aliquot the DNASE1L3 antibody and store frozen at -20oC or colder. Avoid repeated freeze-thaw cycles.