

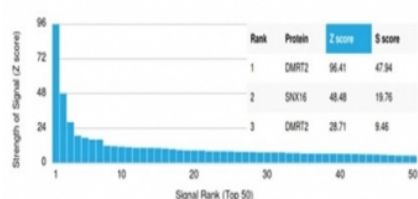
## DMRT2 Antibody [clone PCRP-DMRT2-1B11] (V9601)

Catalog No.	Formulation	Size
V9601-100UG	0.2 mg/ml in 1X PBS with 0.1 mg/ml BSA (US sourced), 0.05% sodium azide	100 ug
V9601-20UG	0.2 mg/ml in 1X PBS with 0.1 mg/ml BSA (US sourced), 0.05% sodium azide	20 ug
V9601SAF-100UG	1 mg/ml in 1X PBS; BSA free, sodium azide free	100 ug

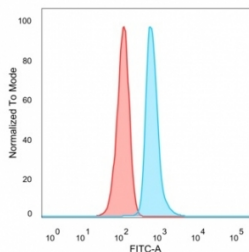
[Bulk quote request](#)

<b>Availability</b>	1-3 business days
<b>Species Reactivity</b>	Human
<b>Format</b>	Purified
<b>Clonality</b>	Monoclonal (mouse origin)
<b>Isotype</b>	Mouse IgG2b
<b>Clone Name</b>	PCRP-DMRT2-1B11
<b>Purity</b>	Protein A/G affinity
<b>UniProt</b>	Q9Y5R5
<b>Localization</b>	Nucleus
<b>Applications</b>	Flow Cytometry : 1-2ug/million cells Western Blot : 1-2ug/ml
<b>Limitations</b>	This DMRT2 antibody is available for research use only.

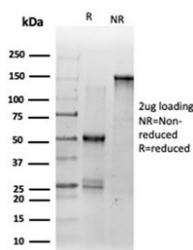
Human Protein Microarray Specificity Validation



Analysis of HuProt(TM) microarray containing more than 19,000 full-length human proteins using DMRT2 antibody (clone PCRP-DMRT2-1B11). These results demonstrate the foremost specificity of the PCRP-DMRT2-1B11 mAb. Z- and S- score: The Z-score represents the strength of a signal that an antibody (in combination with a fluorescently-tagged anti-IgG secondary Ab) produces when binding to a particular protein on the HuProt(TM) array. Z-scores are described in units of standard deviations (SD#39;s) above the mean value of all signals generated on that array. If the targets on the HuProt(TM) are arranged in descending order of the Z-score, the S-score is the difference (also in units of SD#39;s) between the Z-scores. The S-score therefore represents the relative target specificity of an Ab to its intended target.



FACS staining of PFA-fixed human HeLa cells with DMRT2 antibody (blue, clone PCRP-DMRT2-1B11) and isotype control (red).



SDS-PAGE analysis of purified, BSA-free DMRT2 antibody (clone PCRP-DMRT2-1B11) as confirmation of integrity and purity.

## Description

The protein encoded by this gene belongs to the DMRT gene family, sharing a DM DNA-binding domain with *Drosophila* (*dsx*) and *C. elegans* *mab3*, genes involved in sex determination in these organisms. Also, this gene is located in a region of the human genome (chromosome 9p24.3) associated with gonadal dysgenesis and XY sex reversal. Hence this gene is one of the candidates for sex-determining gene(s) on chr 9. Transcriptional activator that directly regulates early activation of the myogenic determination gene MYF5 by binding in a sequence-specific manner to the early epaxial enhancer element of it. Involved in somitogenesis during embryogenesis and somite development and differentiation into sclerotome and dermomyotome. Required for the initiation and/or maintenance of proper organization of the sclerotome, dermomyotome and myotome (By similarity).

## Application Notes

Optimal dilution of the DMRT2 antibody should be determined by the researcher.

## Immunogen

Recombinant full-length human DMRT2 protein was used as the immunogen for the DMRT2 antibody.

## Storage

Aliquot the DMRT2 antibody and store frozen at -20°C or colder. Avoid repeated freeze-thaw cycles.