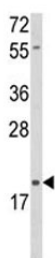


## DLK2 Antibody (F51483)

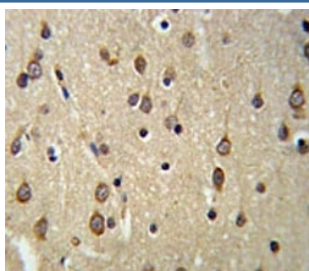
Catalog No.	Formulation	Size
F51483-0.4ML	In 1X PBS, pH 7.4, with 0.09% sodium azide	0.4 ml
F51483-0.08ML	In 1X PBS, pH 7.4, with 0.09% sodium azide	0.08 ml

[Bulk quote request](#)

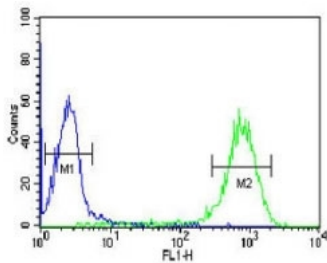
<b>Availability</b>	1-3 business days
<b>Species Reactivity</b>	Human
<b>Format</b>	Antigen affinity purified
<b>Clonality</b>	Polyclonal (rabbit origin)
<b>Isotype</b>	Rabbit Ig
<b>Purity</b>	Antigen affinity
<b>UniProt</b>	Q6UY11
<b>Applications</b>	Western Blot : 1:1000 IHC (Paraffin) : 1:50-1:100 Flow Cytometry : 1:10-1:50
<b>Limitations</b>	This DLK2 antibody is available for research use only.



Western blot analysis of DLK2 antibody and HL-60 lysate. Predicted molecular weight: 40/21 kDa (isoform 1/2).



DLK2 antibody IHC analysis in formalin fixed and paraffin embedded brain tissue.



DLK2 antibody intracellular flow cytometric analysis of HL-60 cells (green) compared to a [negative control](http://www.nsjbio.com/search_result.php?search_txt=n1001) (blue). FITC-conjugated goat-anti-rabbit secondary Ab was used for the analysis.

## Description

DLK2 (Delta like protein 2) affects adipogenesis of 3T3-L1 preadipocytes and mesenchymal C3H10T1/2 cells suggesting a role as a regulator of adipogenesis.

## Application Notes

Titration of the DLK2 antibody may be required due to differences in protocols and secondary/substrate sensitivity.

## Immunogen

A portion of amino acids 353-380 from the human protein was used as the immunogen for this DLK2 antibody.

## Storage

Aliquot the DLK2 antibody and store frozen at -20oC or colder. Avoid repeated freeze-thaw cycles.