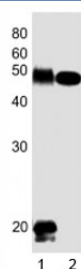


DLK1 Antibody (F52920)

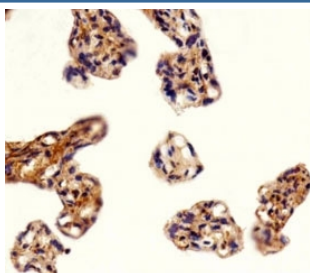
| Catalog No. | Formulation | Size |
|---------------|--|---------|
| F52920-0.4ML | In 1X PBS, pH 7.4, with 0.09% sodium azide | 0.4 ml |
| F52920-0.08ML | In 1X PBS, pH 7.4, with 0.09% sodium azide | 0.08 ml |

Bulk quote request

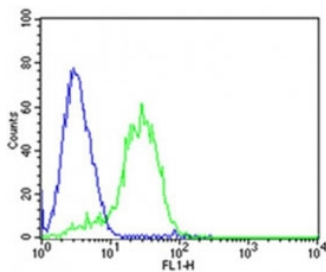
| | |
|---------------------------|---|
| Availability | 1-3 business days |
| Species Reactivity | Human, Mouse |
| Format | Antigen affinity purified |
| Clonality | Polyclonal (rabbit origin) |
| Isotype | Rabbit Ig |
| Purity | Antigen affinity |
| UniProt | P80370 |
| Applications | Western Blot : 1:1000 IHC (Paraffin) : 1:25 Flow Cytometry : 1:25 |
| Limitations | This DLK1 antibody is available for research use only. |



Western blot testing of DLK1 antibody at 1:1000 dilution. Lane 1: human placenta lysate; 2: mouse skeletal muscle lysate; Observed molecular weight 41~60 kDa depending on glycosylation level.



Immunohistochemical analysis of paraffin-embedded human placenta section using DLK1 antibody



Flow cytometric analysis of HepG2 cells using DLK1 antibody (green) compared to an isotype control (blue). Ab was diluted at 1:25 dilution.

Description

May have a role in neuroendocrine differentiation.

Application Notes

Titration of the DLK1 antibody may be required due to differences in protocols and secondary/substrate sensitivity.

Immunogen

This DLK1 antibody was produced from a rabbit immunized with a KLH conjugated synthetic peptide between 368-402 amino acids from the C-terminal region of human DLK1.

Storage

Aliquot the DLK1 antibody and store frozen at -20oC or colder. Avoid repeated freeze-thaw cycles.