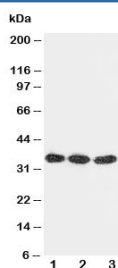


## DKK1 Antibody (R30534)

Catalog No.	Formulation	Size
R30534	0.5mg/ml if reconstituted with 0.2ml sterile DI water	100 ug

**Bulk quote request**

<b>Availability</b>	1-3 business days
<b>Species Reactivity</b>	Human, Mouse, Rat
<b>Format</b>	Antigen affinity purified
<b>Clonality</b>	Polyclonal (rabbit origin)
<b>Isotype</b>	Rabbit IgG
<b>Purity</b>	Antigen affinity
<b>Buffer</b>	Lyophilized from 1X PBS with 2.5% BSA and 0.025% sodium azide/thimerosal
<b>UniProt</b>	O94907
<b>Applications</b>	Western Blot : 0.5-1ug/ml
<b>Limitations</b>	This DKK1 antibody is available for research use only.



Western blot testing of DKK1 antibody and Lane 1: U87; 2: MCF-7; 3: A549 cell lysate. Predicted molecular weight: 26-40 kDa depending on glycosylation level.

## Description

Dickkopf-related protein 1 is a protein that in humans is encoded by the DKK1 gene. This gene encodes a protein that is a member of the dickkopf family. By genomic sequence analysis, determined that the gene contains 4 exons. It is a secreted protein with two cysteine rich regions and is involved in embryonic development through its inhibition of the WNT signaling pathway. Elevated levels of DKK1 in bone marrow plasma and peripheral blood is associated with the presence of osteolytic bone lesions in patients with multiple myeloma.

## Application Notes

The stated application concentrations are suggested starting amounts. Titration of the DKK1 antibody may be required

due to differences in protocols and secondary/substrate sensitivity.

## **Immunogen**

An amino acid sequence from the N-terminus of human DKK1 (YPGGNKYQTIDNYQPY) was used as the immunogen for this DKK1 antibody.

## **Storage**

After reconstitution, the DKK1 antibody can be stored for up to one month at 4oC. For long-term, aliquot and store at -20oC. Avoid repeated freezing and thawing.