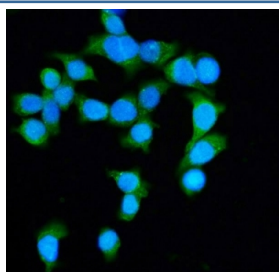


## Diaphanous Homolog 1 Antibody / DIAPH1 (RQ6700)

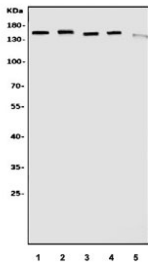
Catalog No.	Formulation	Size
RQ6700	0.5mg/ml if reconstituted with 0.2ml sterile DI water	100 ug

**Bulk quote request**

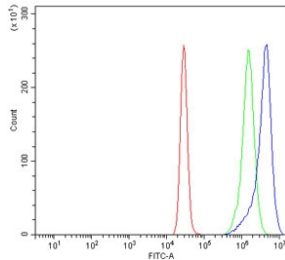
<b>Availability</b>	1-3 business days
<b>Species Reactivity</b>	Human, Monkey
<b>Format</b>	Antigen affinity purified
<b>Clonality</b>	Polyclonal (rabbit origin)
<b>Isotype</b>	Rabbit IgG
<b>Purity</b>	Antigen affinity purified
<b>Buffer</b>	Lyophilized from 1X PBS with 2% Trehalose
<b>UniProt</b>	O60610
<b>Localization</b>	Cytoplasmic, nuclear
<b>Applications</b>	Western Blot : 1-2ug/ml Immunofluorescence (FFPE) : 5ug/ml Flow Cytometry : 1-3ug/million cells Direct ELISA : 0.1-0.5ug/ml
<b>Limitations</b>	This Diaphanous Homolog 1 antibody is available for research use only.



Immunofluorescent staining of FFPE human Caco-2 cells with Diaphanous Homolog 1 antibody (green) and DAPI nuclear stain (blue). HIER: steam section in pH6 citrate buffer for 20 min.



Western blot testing of 1) human K562, 2) human Raji, 3) human HeLa, 4) monkey COS-7 and 5) human Caco-2 cell lysate with Diaphanous Homolog 1 antibody. Predicted molecular weight ~140 kDa.



Flow cytometry testing of human K562 cells with Diaphanous Homolog 1 antibody at 1ug/million cells (blocked with goat sera); Red=cells alone, Green=isotype control, Blue=Diaphanous Homolog 1 antibody.

## Description

Protein diaphanous homolog 1 is a protein that in humans is encoded by the DIAPH1 gene. This gene is a homolog of the Drosophila diaphanous gene, and has been linked to autosomal dominant, fully penetrant, nonsyndromic sensorineural progressive low-frequency hearing loss. Actin polymerization involves proteins known to interact with diaphanous protein in Drosophila and mouse. It has therefore been speculated that this gene may have a role in the regulation of actin polymerization in hair cells of the inner ear. Alternatively spliced transcript variants encoding distinct isoforms have been found for this gene.

## Application Notes

Optimal dilution of the Diaphanous Homolog 1 antibody should be determined by the researcher.

## Immunogen

Recombinant human protein (amino acids D1039-Q1153) was used as the immunogen for the Diaphanous Homolog 1 antibody.

## Storage

After reconstitution, the Diaphanous Homolog 1 antibody can be stored for up to one month at 4°C. For long-term, aliquot and store at -20°C. Avoid repeated freezing and thawing.