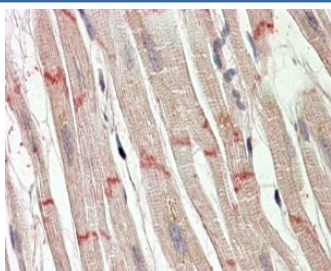


Desmoplakin Antibody / DSP (R35256)

Catalog No.	Formulation	Size
R35256-100UG	0.5 mg/ml in 1X TBS, pH7.3, with 0.5% BSA (US sourced) and 0.02% sodium azide	100 ug

[Bulk quote request](#)

Availability	1-3 business days
Species Reactivity	Human
Predicted Reactivity	Mouse, Rat
Format	Antigen affinity purified
Clonality	Polyclonal (goat origin)
Isotype	Goat Ig
Purity	Antigen affinity
Gene ID	1832
Applications	Immunohistochemistry (FFPE) : 3-6ug/ml ELISA (peptide) LOD : 1:4000
Limitations	This Desmoplakin antibody is available for research use only.



IHC testing of FFPE human heart with Desmoplakin antibody at 4ug/ml. HIER: steamed with pH6 citrate buffer, AP-staining. Cardiomyocardial fiber junction staining seen.

Description

Additional name(s) for this target protein: DSP, DPI

Application Notes

Optimal dilution of the Desmoplakin antibody should be determined by the researcher.

1. This Desmoplakin antibody is specific for isoform 1.

Immunogen

Amino acids QESVKQAHLRNEH were used as the immunogen for this Desmoplakin antibody.

Storage

Aliquot and store the Desmoplakin antibody at -20oC.