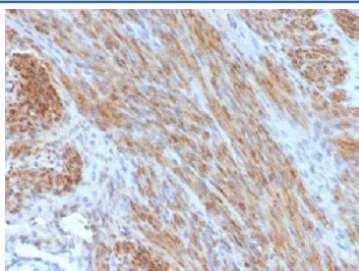


Desmin Antibody [clone DES/1711] (V3195)

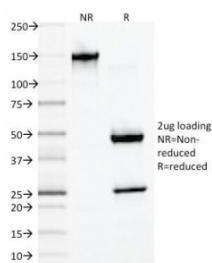
Catalog No.	Formulation	Size
V3195-100UG	0.2 mg/ml in 1X PBS with 0.1 mg/ml BSA (US sourced) and 0.05% sodium azide	100 ug
V3195-20UG	0.2 mg/ml in 1X PBS with 0.1 mg/ml BSA (US sourced) and 0.05% sodium azide	20 ug
V3195SAF-100UG	1 mg/ml in 1X PBS; BSA free, sodium azide free	100 ug

Bulk quote request

Availability	1-3 business days
Species Reactivity	Human, Mouse, Rat
Format	Purified
Clonality	Monoclonal (mouse origin)
Isotype	Mouse IgG1, kappa
Clone Name	DES/1711
Purity	Protein G affinity chromatography
UniProt	P17661
Localization	Cytoplasmic
Applications	Immunofluorescence : 1-2ug/ml Flow Cytometry : 0.5-1ug/10 ⁶ cells Western Blot : 0.5-1ug/ml Immunohistochemistry (FFPE) : 1-2ug/ml for 30 min at RT
Limitations	This Desmin antibody is available for research use only.



IHC testing of FFPE human uterus with Desmin antibody (clone DES/1711). Required HIER: boil tissue sections in 10mM citrate buffer, pH 6, for 10-20 min.



SDS-PAGE Analysis of Purified, BSA-Free Desmin Antibody (clone DES/1711).
Confirmation of Integrity and Purity of the Antibody.

Description

Cytoskeletal intermediate filaments (IFs) constitute a diverse group of proteins that are expressed in a highly tissue-specific manner. IFs are constructed from two-chain α -helical coiled-coil molecules arranged on an imperfect helical lattice, and have been widely used as markers for distinguishing individual cell types within a tissue and identifying the origins of metastatic tumors. Vimentin is an IF general marker of cells originating in the mesenchyme. Vimentin and Desmin, a related class III IF, are both expressed during skeletal muscle development. Desmin, a 469 amino acid protein found near the Z line in sarcomeres, is expressed more frequently in adult differentiated state tissues. Anti-desmin detects cells of normal smooth, skeletal, and cardiac muscles. Antibody reacts with leiomyomas, leiomyosarcoma, rhabdomyomas, rhabdomyosarcoma, and perivascular cells of glomus tumors of the skin.

Application Notes

Optimal dilution of the Desmin antibody should be determined by the researcher.

Immunogen

Recombinant human Desmin was used as the immunogen for the Desmin antibody.

Storage

Store the Desmin antibody at 2-8°C (with azide) or aliquot and store at -20°C or colder (without azide).