

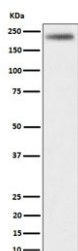
DENN Antibody / Differentially expressed in normal and neoplastic cells [clone 28M86] (RQ8582)

Catalog No.	Formulation	Size
RQ8582	Antibody in PBS with 0.02% sodium azide, 50% glycerol and 0.4-0.5mg/ml BSA	100 ug

Recombinant **RABBIT MONOCLONAL**

[Bulk quote request](#)

Availability	1-3 days
Species Reactivity	Human
Format	Purified
Clonality	Recombinant Rabbit Monoclonal
Isotype	Rabbit IgG
Clone Name	28M86
Purity	Affinity chromatography
UniProt	Q8WXG6
Applications	Western Blot : 1:500-1:2000
Limitations	This DENN antibody is available for research use only.



Western blot testing of human HeLa cell lysate with DENN antibody. Predicted molecular weight ~176 kDa.

Application Notes

Optimal dilution of the DENN antibody should be determined by the researcher.

Immunogen

A synthetic peptide from human MAP kinase-activating death domain protein was used as the immunogen for the DENN antibody.

Storage

Store the DENN antibody at -20oC.