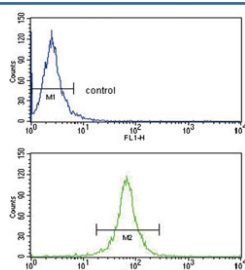


DCN Antibody / Decorin (F54863)

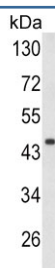
Catalog No.	Formulation	Size
F54863-0.4ML	In 1X PBS, pH 7.4, with 0.09% sodium azide	0.4 ml
F54863-0.08ML	In 1X PBS, pH 7.4, with 0.09% sodium azide	0.08 ml

Bulk quote request

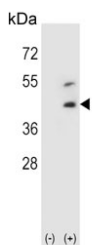
Availability	1-3 business days
Species Reactivity	Human, Mouse
Format	Purified
Clonality	Polyclonal (rabbit origin)
Isotype	Rabbit IgG
Purity	Purified
UniProt	P07585
Applications	Immunohistochemistry (FFPE) : 1:10-1:50 Flow Cytometry : 1:10-1:50 (1x10e6 cells) Western Blot : 1:500-1:1000
Limitations	This DCN antibody is available for research use only.



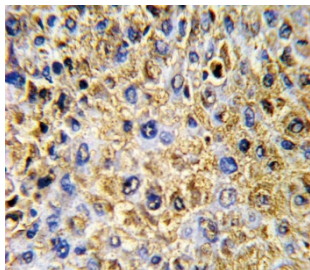
Flow cytometry testing of human HepG2 cells with DCN antibody; Blue=isotype control, Green= DCN antibody.



Western blot testing of mouse heart tissue lysate with DCN antibody. Predicted molecular weight ~40 kDa.



Western blot testing of 1) non-transfected and 2) transfected 293 cell lysate with DCN antibody.



IHC testing of FFPE human hepatocellular carcinoma tissue with DCN antibody. HIER: steam section in pH6 citrate buffer for 20 min and allow to cool prior to staining.

Description

DCN is a small cellular or pericellular matrix proteoglycan that is closely related in structure to biglycan protein. The protein and biglycan are thought to be the result of a gene duplication. This protein is a component of connective tissue, binds to type I collagen fibrils, and plays a role in matrix assembly. It contains one attached glycosaminoglycan chain. This protein is capable of suppressing the growth of various tumor cell lines.

Application Notes

The stated application concentrations are suggested starting points. Titration of the DCN antibody may be required due to differences in protocols and secondary/substrate sensitivity.

Immunogen

A portion of amino acids 122-150 from the human protein was used as the immunogen for the DCN antibody.

Storage

Aliquot the DCN antibody and store frozen at -20oC or colder. Avoid repeated freeze-thaw cycles.