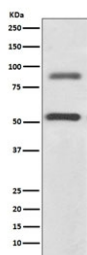


DCLK1 Antibody / Doublecortin-like kinase 1 [clone AAFA-4] (RQ4720)

| Catalog No. | Formulation | Size |
|-------------|--|--------|
| RQ4720 | Antibody in PBS with 0.02% sodium azide, 50% glycerol and 0.4-0.5mg/ml BSA | 100 ul |

[Bulk quote request](#)

| | |
|--------------------|---|
| Availability | 1-2 weeks |
| Species Reactivity | Human, Mouse, Rat |
| Format | Purified |
| Clonality | Rabbit Monoclonal |
| Isotype | Rabbit IgG |
| Clone Name | AAFA-4 |
| Purity | Affinity purified |
| UniProt | O15075 |
| Applications | Western Blot : 1:500-1:2000 |
| Limitations | This DCLK1 antibody is available for research use only. |



Western blot testing human SH-SY5Y cell lysate with DCLK1 antibody. Predicted molecular weight ~82/47 kDa (multiple isoforms).

Description

The DCLK1 gene encodes a member of the protein kinase superfamily and the doublecortin family. The protein encoded by this gene contains two N-terminal doublecortin domains, which bind microtubules and regulate microtubule polymerization, a C-terminal serine/threonine protein kinase domain, which shows substantial homology to Ca²⁺/calmodulin-dependent protein kinase, and a serine/proline-rich domain in between the doublecortin and the protein kinase domains, which mediates multiple protein-protein interactions. The microtubule-polymerizing activity of the encoded protein is independent of its protein kinase activity. The encoded protein is involved in several different cellular processes, including neuronal migration, retrograde transport, neuronal apoptosis and neurogenesis. This gene is up-

regulated by brain-derived neurotrophic factor and associated with memory and general cognitive abilities. Multiple transcript variants generated by two alternative promoter usage and alternative splicing have been reported, but the full-length nature and biological validity of some variants have not been defined. These variants encode different isoforms, which are differentially expressed and have different kinase activities. [RefSeq]

Application Notes

Optimal dilution of the DCLK1 antibody should be determined by the researcher.

Immunogen

A synthetic peptide specific to human Doublecortin-like kinase 1 was used as the immunogen for the DCLK1 antibody.

Storage

Store the DCLK1 antibody at -20oC.