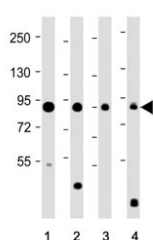


DCAMKL1 Antibody / Doublecortin-like and CAM kinase-like 1 / DCLK1 (F55057)

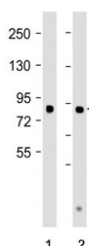
Catalog No.	Formulation	Size
F55057-0.4ML	In 1X PBS, pH 7.4, with 0.09% sodium azide	0.4 ml
F55057-0.08ML	In 1X PBS, pH 7.4, with 0.09% sodium azide	0.08 ml

Bulk quote request

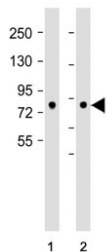
Availability	1-3 business days
Species Reactivity	Human, Mouse
Format	Antigen affinity purified
Clonality	Polyclonal (rabbit origin)
Isotype	Rabbit Ig
Purity	Antigen affinity
UniProt	Q9JLM8
Applications	Western Blot : 1:1000-1:5000
Limitations	This DCAMKL1 antibody is available for research use only.



Western blot testing of 1) human brain, 2) mouse brain, 3) rat brain and 4) TT cell lysate with DCAMKL1 antibody. Predicted molecular weight: ~82 kDa and ~47 kDa (multiple isoforms).



Western blot testing of 1) human brain and 2) mouse brain tissue lysate with DCAMKL1 antibody. Predicted molecular weight: ~82 kDa and ~47 kDa (multiple isoforms).



Western blot testing of 1) human brain and 2) mouse brain tissue lysate with DCAMKL1 antibody. Predicted molecular weight: ~82 kDa and ~47 kDa (multiple isoforms).

Description

This gene encodes a member of the protein kinase superfamily and the doublecortin family called Doublecortin-like and CAM kinase-like 1 (DCAMKL1) or Doublecortin-like kinase 1 (DCLK1). The protein encoded by this gene contains two N-terminal doublecortin domains, which bind microtubules and regulate microtubule polymerization, a C-terminal serine/threonine protein kinase domain, which shows substantial homology to Ca²⁺/calmodulin-dependent protein kinase, and a serine/proline-rich domain in between the doublecortin and the protein kinase domains, which mediates multiple protein-protein interactions. The microtubule-polymerizing activity of the encoded protein is independent of its protein kinase activity.

Application Notes

Titration of the DCAMKL1 antibody may be required due to differences in protocols and secondary/substrate sensitivity.

Immunogen

A portion of amino acids 690-720 from the human protein was used as the immunogen for this DCAMKL1 antibody.

Storage

Aliquot the DCAMKL1 antibody and store frozen at -20°C or colder. Avoid repeated freeze-thaw cycles.